

CUPOLEX[®]

Aerated structural flooring system

NO MOISTURE, NO RADON GAS
FOR YOUR HEALTH AND WELL-BEING



Building with Cupolex
will give you
peace of mind



PONTAROLO[®]
ENGINEERING



www.pontarolo.com



Aerated floor system, interconnectable to compose a self bearing structure suitable for receiving poured concrete

What is Cupolex

Aerated flooring system element with a dome shape, mutually and fastly connected will compose a self-bearing structure suitable to admit the concrete casting for the construction of the foundation platform.

The Cupolex system creates a hollow space for a ventilation under the floor. The recycle of air, that is formed below the slab, conveys the humidity and any radon gas, outside the buildings.

With Cupolex the living is healthier and brings benefits for the duration of the building.

Cupolex is an ideal product to be used for renovation instead of using gravel material for raising the deck.

Good reasons for using Cupolex

- Waterproof against moisture.
- Ventilation in all directions.
- Healthiness in the living.
- Conveys humidity moisture and radon gas outside the building.
- Economical and easy installation.
- Top finishing possible with carpet, parquet floors and tiles.
- Very high bearing capacity, even when use in industrial applications.
- Air heating and conditioning to floor-level.
- Provides space for running services (ductwork, cables, etc.).
- Hollow spaces for inspections.
- Adapts any types of plan.
- High and safety, supports walking on product before concrete placement.
- Dome made of recycled plastic.

Available height

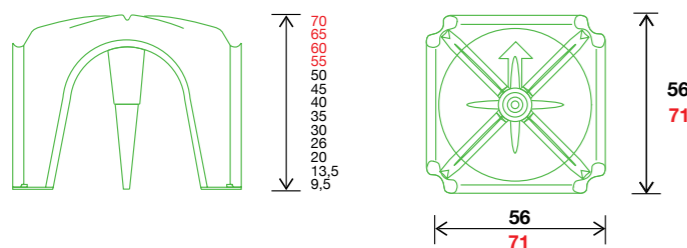
Cupolex is available in the following heights (cm):

9,5 - 13,5 - 20 - 26 - 30 - 35 - 40 - 45 - 50

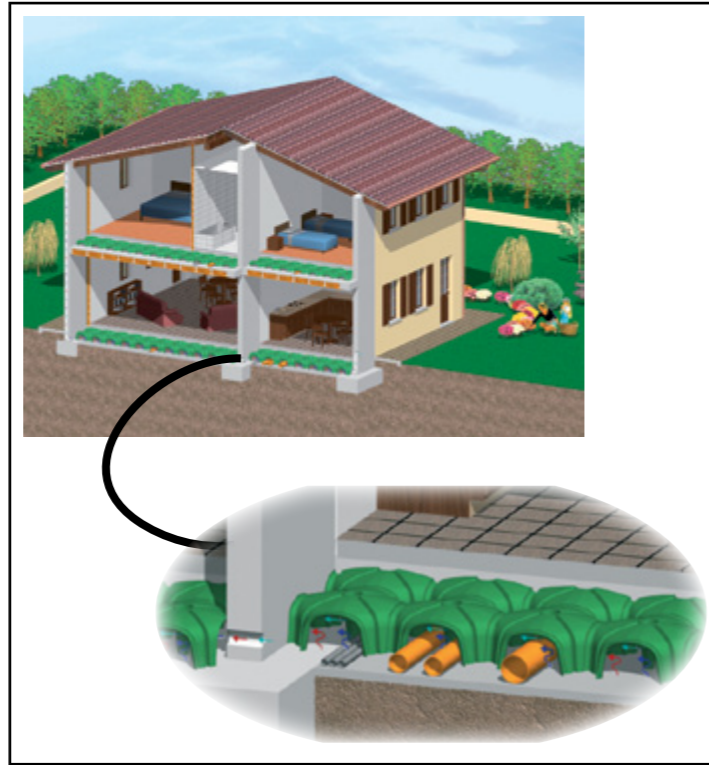
55* - 60* - 65* - 70*

* these units don't have the central cone

Dimensions



Note: 1" = 2,54 cm



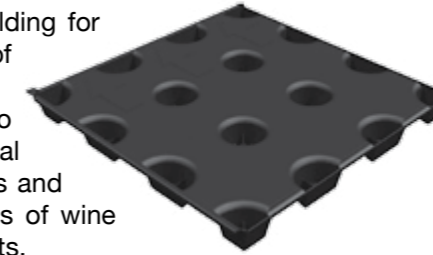
Element for the creation of aerated floor system with a particular shape which allows the concrete to be completely isolated from damp or water for the sub-floor.

Cupolex Windi

Cupolex Windi is an aerated floor system element available in two sizes H 5 and H 10 cm.

It is an hydraulic holding for the whole height of the element.

Cupolex Windi is also ideal for the thermal isolation of balconies and for the improvements of wine cellars and basements.

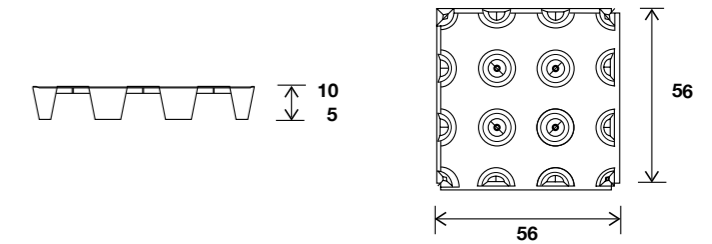


Available height

Cupolex Windi is available in the following heights (cm):

5 - 10

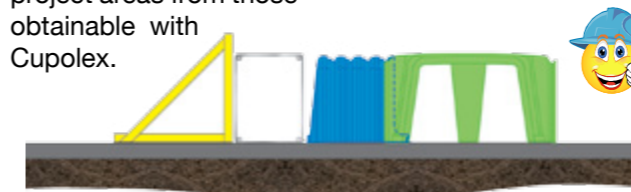
Cupolex Windi dimensions



Element for closing the openings side of Cupolex. This particular shape suits all project dimensions

Good reasons for using Beton Stop

- The corrugated shape of Beton Stop allows to suit the Cupolex system for all the demands of project and to compensate all the measures of the different project areas from those obtainable with Cupolex.



- The use joined of Cupolex and Beton Stop allows to realize, with an only casting of concrete, foundations and slab.

- It is not necessary to cut and waste Cupolex;



- With the pre-cut hole in the Beton Stop provides space for the running of services.
- Saving of money and time.

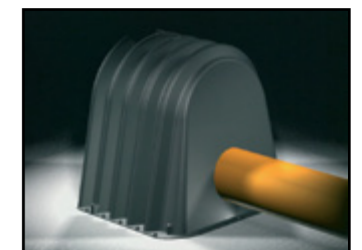
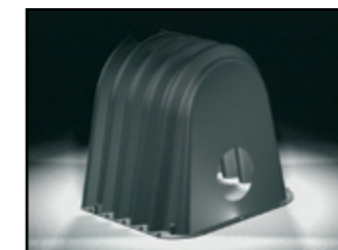
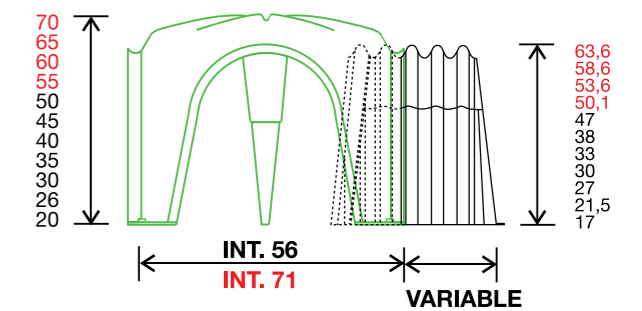


Available height

Beton Stop is available in the following heights (cm):

20 - 26 - 30 - 35 - 40 - 45 - 50 - 55 - 60 - 65 - 70

Beton Stop dimensions



Concrete consumption (m³/m²) top of the dome

Cupolex													Windi	
9,5	13,5	20	26 N	30	35	40	45	50	55	60	65	70	5	10
0,014	0,030	0,035	0,035	0,042	0,045	0,060	0,064	0,065	0,069	0,070	0,071	0,073	0,008	0,011

Common dimensions

The following table contains the dimensions of the required metal reinforcement for the most common applications with: soil Winkler constant of 1 kg/cm³ and 10 cm of lean concrete.

APPLICATION	DEAD LOAD (Kg/m ²)	LIVE LOAD (Kg/m ²)	SLAB THICKNESS (cm)	WIRE MESH
Residential buildings	200	200	5	ø 5/20x20
Offices	200	300	5	ø 5/20x20
Garages	300	700	5	ø 6/20x20
Industrial buildings	300	1200	6	ø 8/20x20
Industrial buildings	300	1600	7	ø 8/15x15

Structural Resistance

Slabs structured with Cupolex have been tested in collaboration with the CNR and the University of Padova and the results implemented in the code of calculation "Easy Cupolex". Please enquire it to our technical office, free of charge.



Walking Support

Cupolex has been tested to support a load of 150 daN applied on plate of 5x5 cm set on the top of the element.



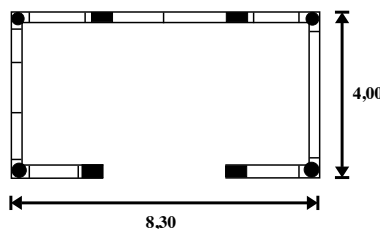
Technical assistance

Our Technical Office is at your disposal to give you assistance during your project.

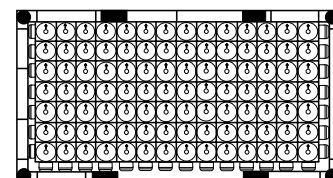
E-mail us a your drawing of foundation in .dwg or .dxf to the following adress:

assistenza@pontarolo.com

You give us



We give you



PONTAROLO[®]
ENGINEERING

Via Clauzetto, 20
33078 San Vito al Tagliamento (PN) - Italy
Tel. + 39 0434 857010
Fax + 39 0434 857014
e-mail : lineaverde@pontarolo.com
www.pontarolo.com