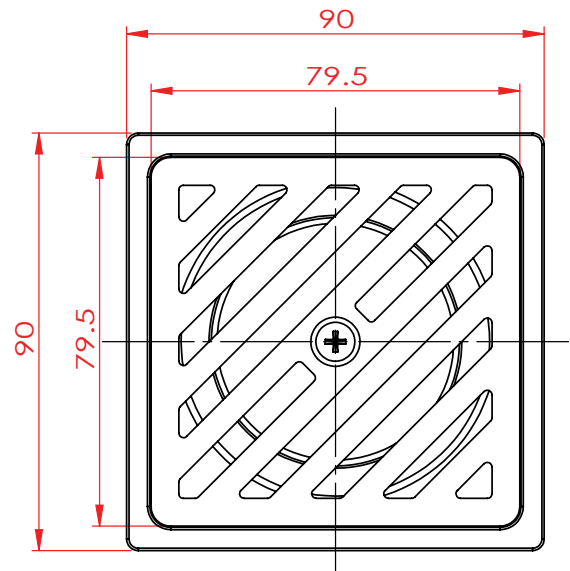
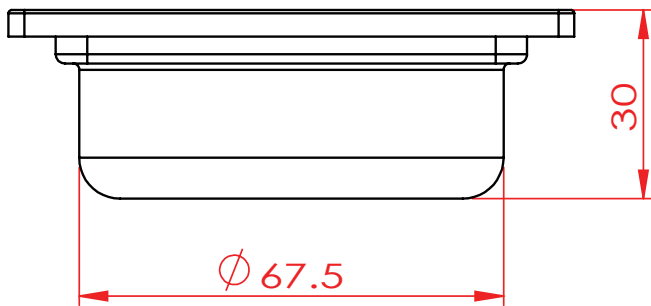




**MOONLER**

QUALITY OF LIFE

STAINLESS STEEL 304



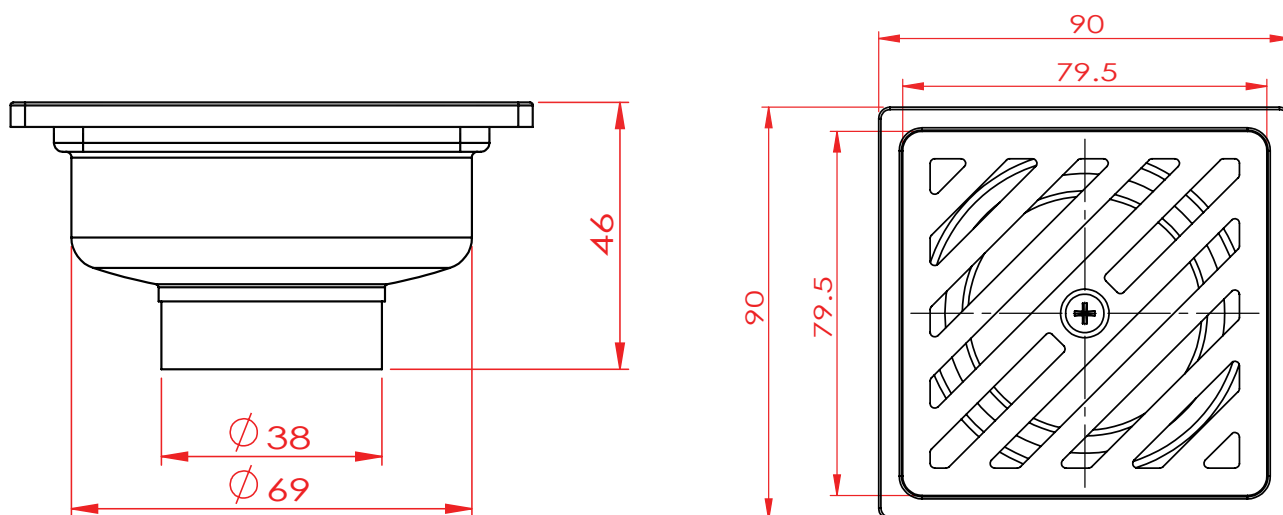
Item Code	Description
1S09-C	Square Anti-odour Floor Drain 9x9 cm. Outlet 1 1/2"



**MOONLER**

QUALITY OF LIFE

STAINLESS STEEL 304



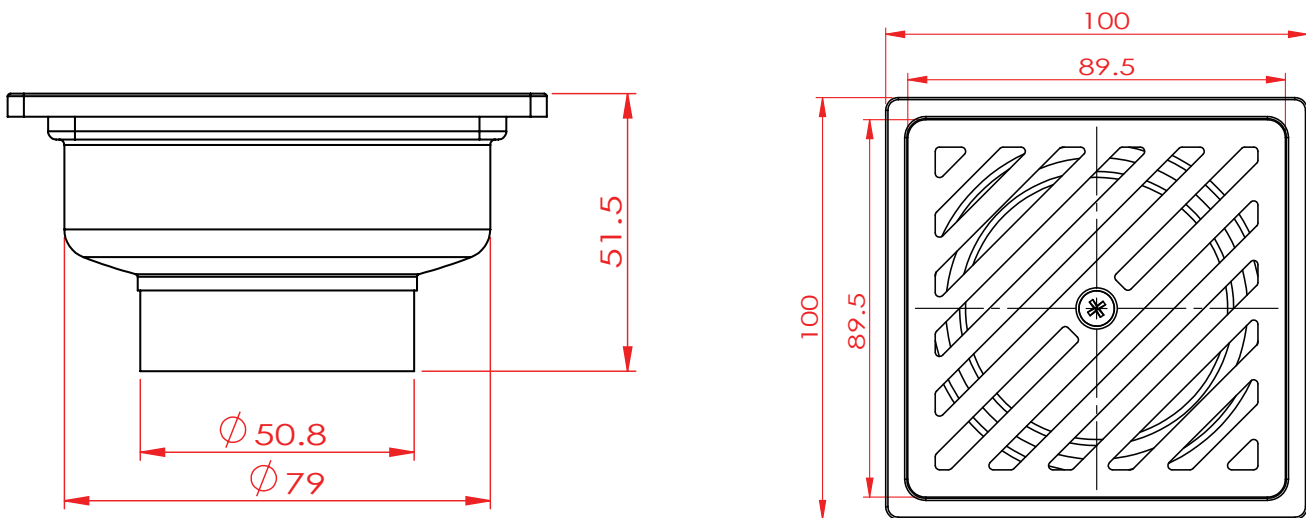
Item Code	Description
1S09X-C	Square Anti-odour Floor Drain 9x9 cm. With connected pipe, Outlet 1 1/2"



**MOONLER**

QUALITY OF LIFE

STAINLESS STEEL 304

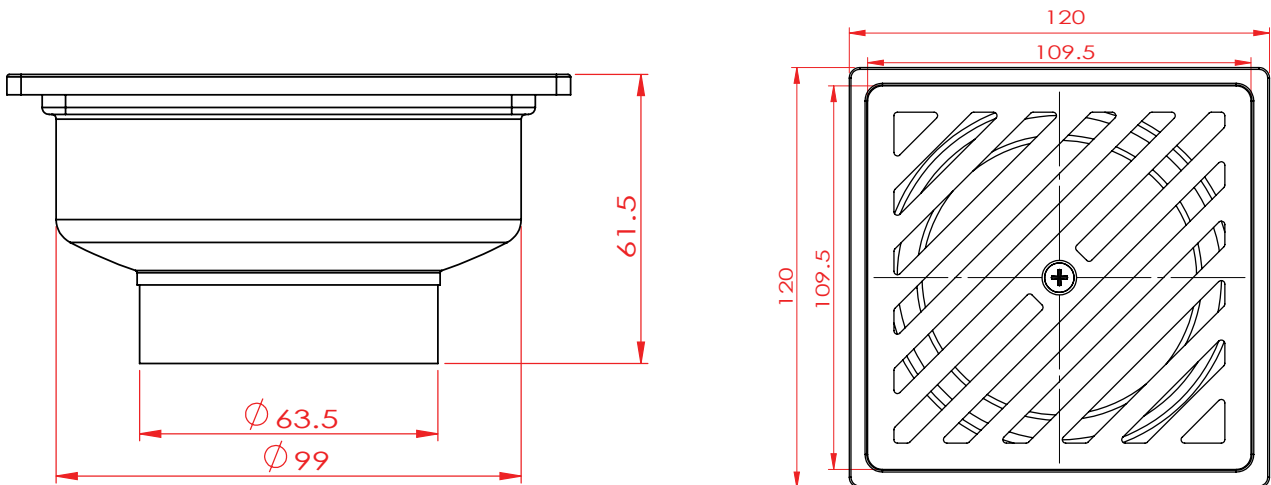


Item Code	Description
1S10PX-C	Square Anti-odour Floor Drain 10x10 cm. With connected pipe, Outlet 2"



**MOONLER**

QUALITY OF LIFE  
STAINLESS STEEL 304



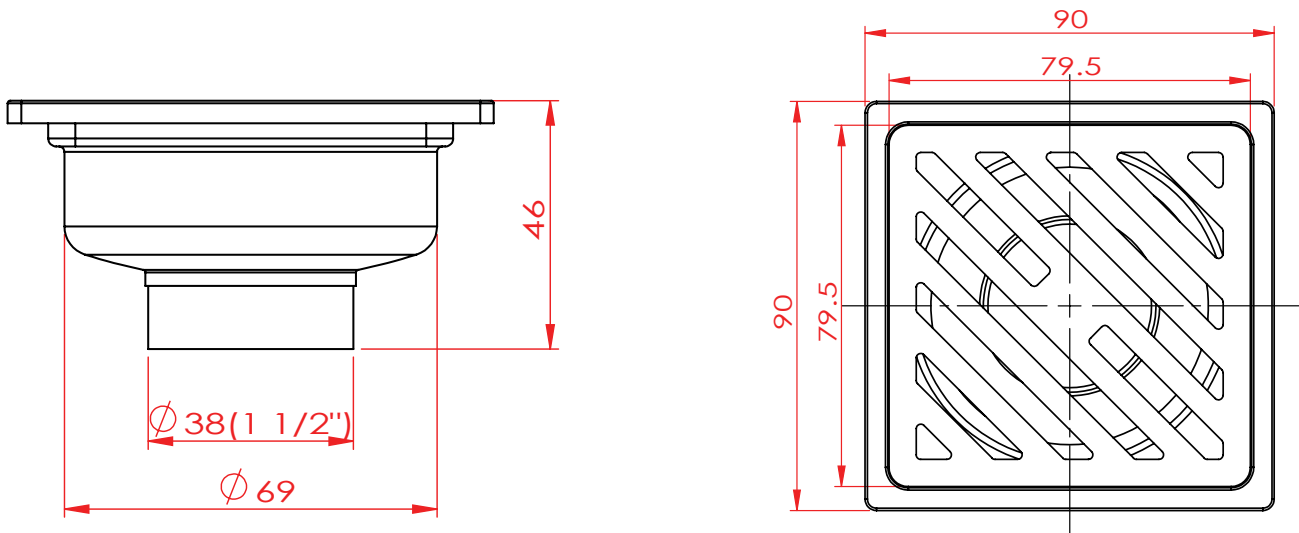
Item Code	Description
1S12PX-C	Square Anti-odour Floor Drain 12x12 cm. With connected pipe, Outlet 2 1/2"



**MOONLER**

QUALITY OF LIFE

STAINLESS STEEL 304

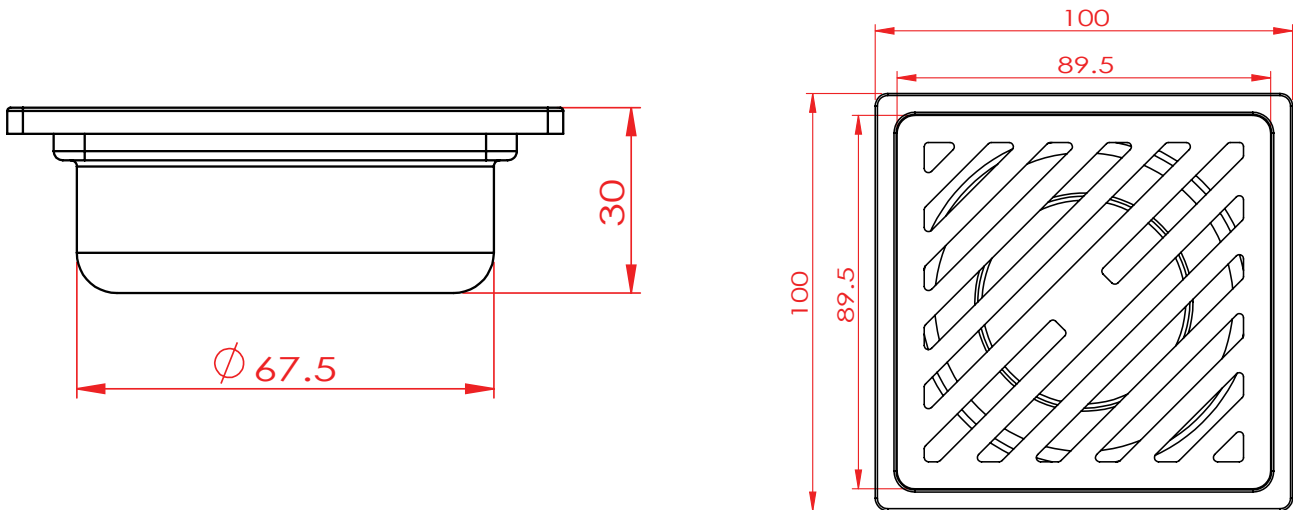


Item Code	Description
1S09PW-C	Square Floor Drain 9x9 cm. With connected pipe, Outlet 1 1/2"



**MOONLER**

QUALITY OF LIFE  
STAINLESS STEEL 304



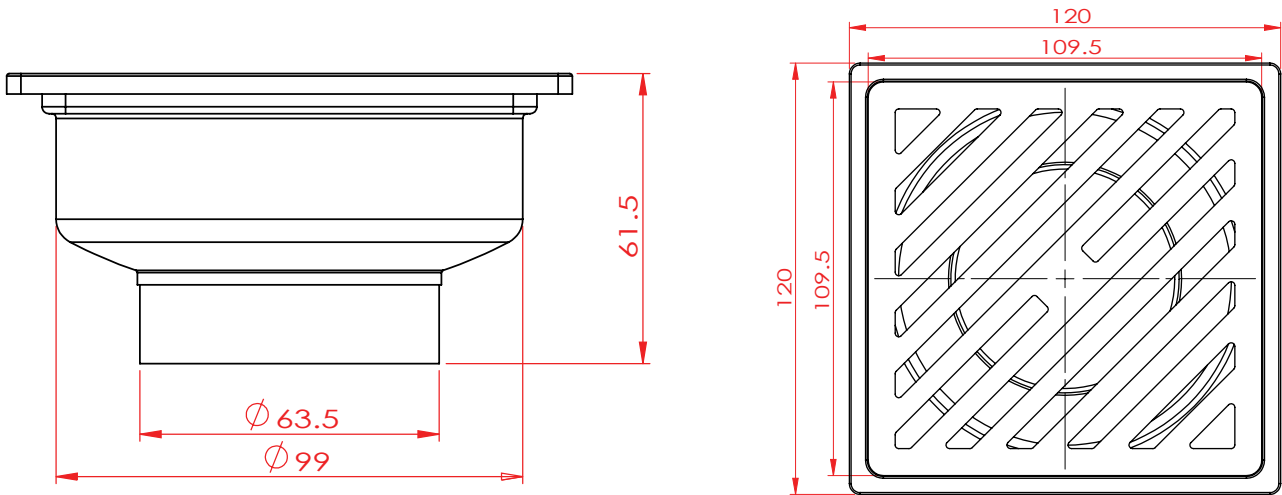
Item Code	Description
1S10PW-C	Square Floor drain 10x10 cm. With connected pipe, Outlet 2"



**MOONLER**

QUALITY OF LIFE

STAINLESS STEEL 304



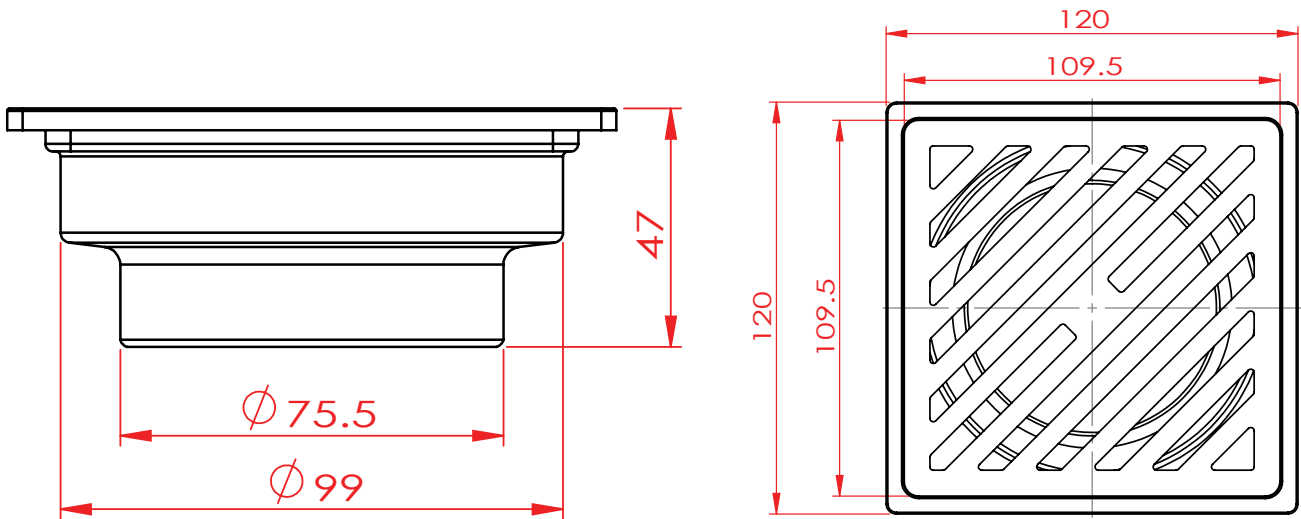
Item Code	Description
1S12PW-C	Square Floor Drain 12x12 cm. With connected pipe, Outlet 2 1/2"



**MOONLER**

QUALITY OF LIFE

STAINLESS STEEL 304



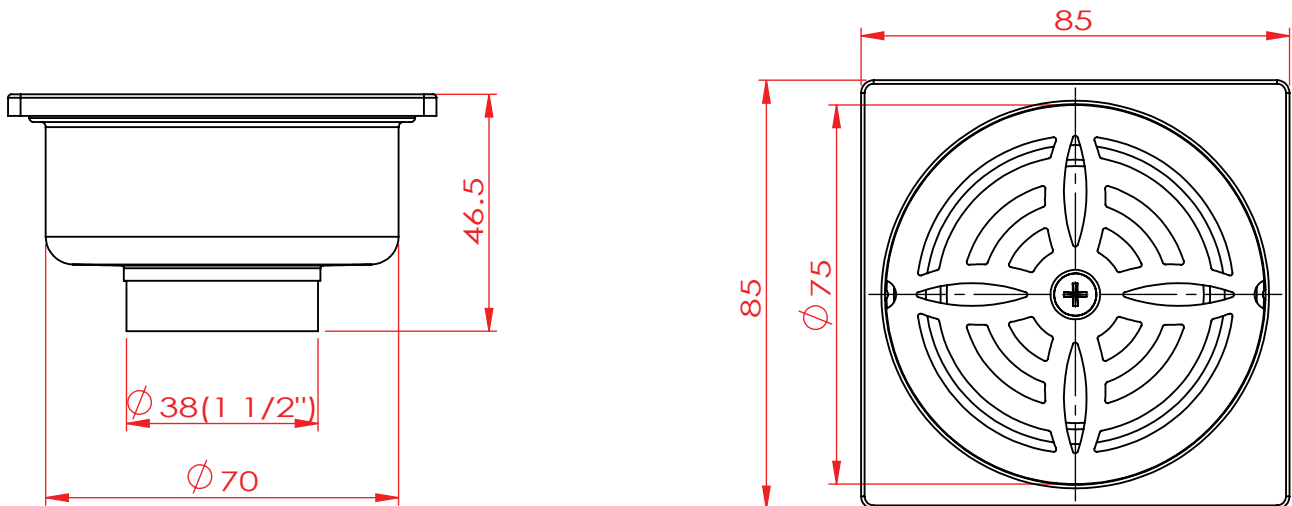
Item Code	Description
1S12PPW-C	Square Floor Drain 12x12 cm. With connected pipe, Outlet 3"





**MOONLER**

QUALITY OF LIFE  
STAINLESS STEEL 304



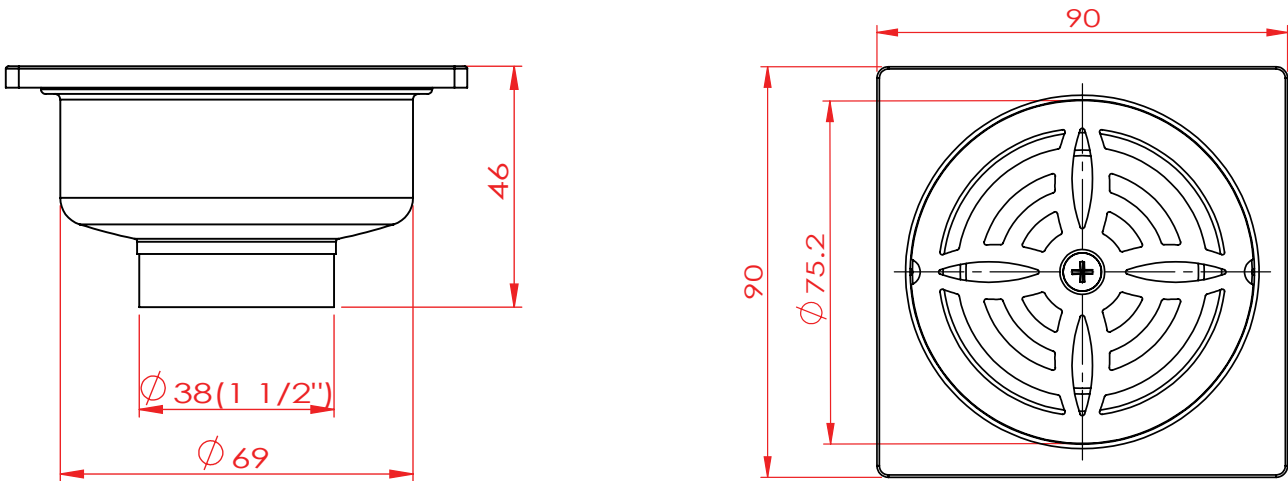
Item Code	Description
2S8.5PX-A	Square Anti-odour Floor Drain 8.5x8.5 cm. With connected pipe, Outlet 1 1/2"



**MOONLER**

QUALITY OF LIFE

STAINLESS STEEL 304

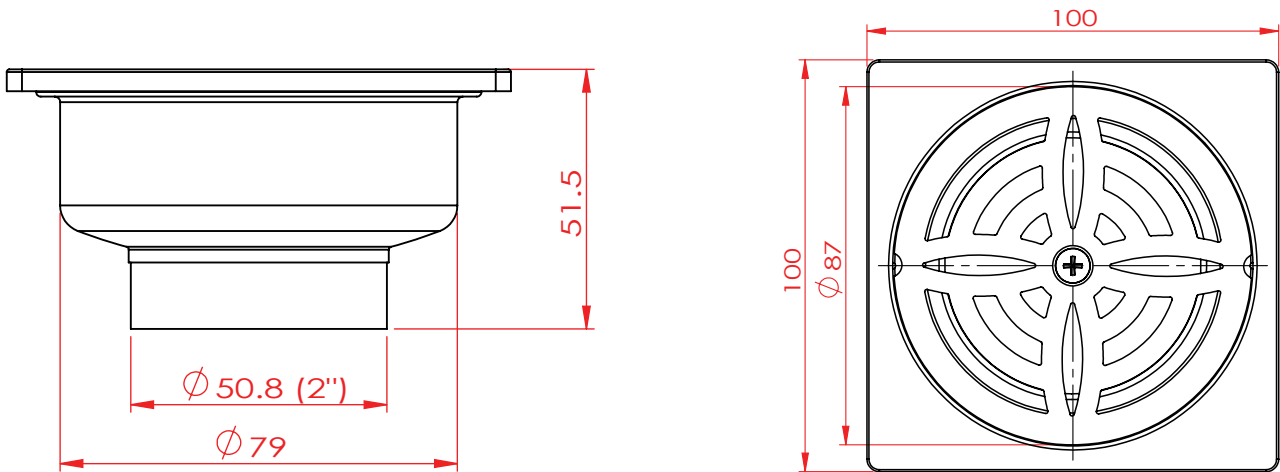


Item Code	Description
2S09PX-A	Square Anti-odour Floor Drain 9x9 cm. With connected pipe, Outlet 1 1/2"



**MOONLER**

QUALITY OF LIFE  
STAINLESS STEEL 304



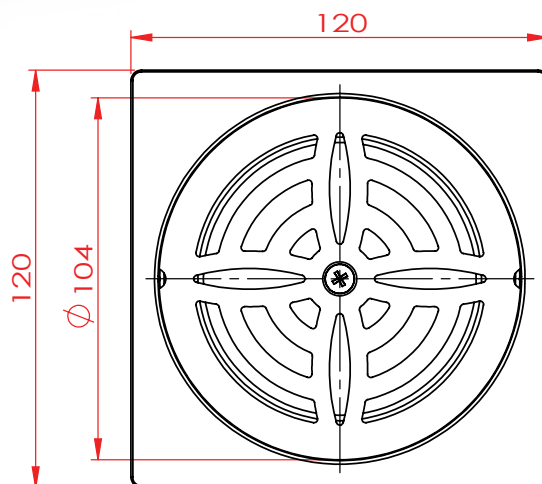
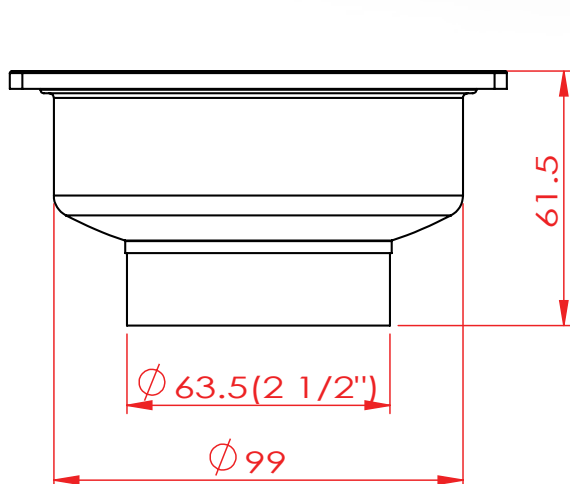
Item Code	Description
2S10PX-A	Square Anti-odour Floor Drain 10x10 cm. With connected pipe, Outlet 2"



**MOONLER**

QUALITY OF LIFE

STAINLESS STEEL 304



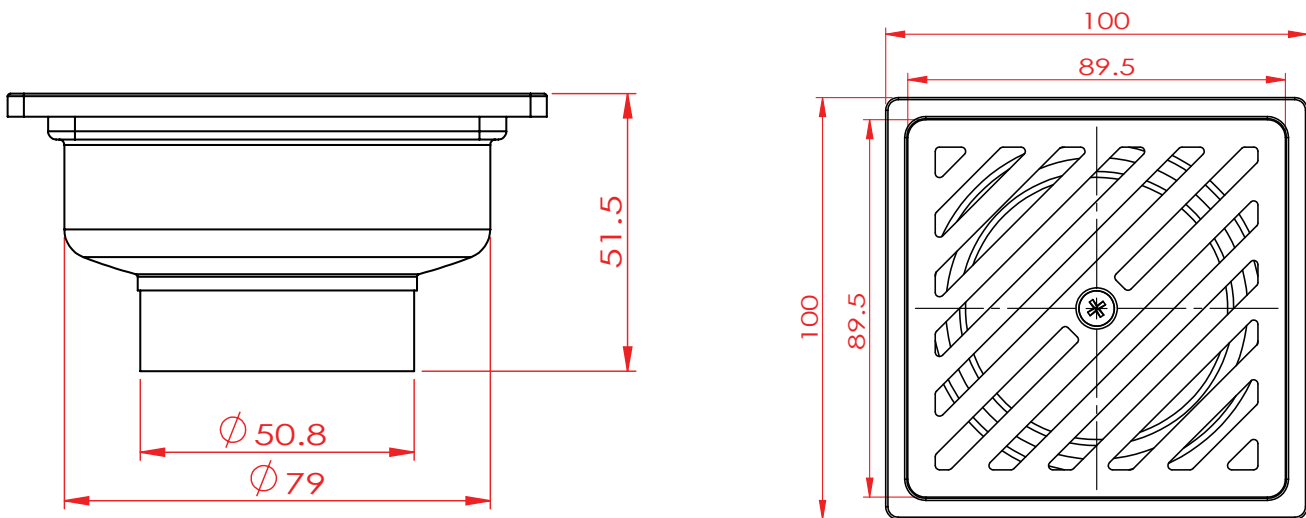
Item Code	Description
2S12PX-A	Square Anti-odour Floor Drain 12x12 cm. With connected pipe, Outlet 2 1/2"



**MOONLER**

QUALITY OF LIFE

STAINLESS STEEL 304



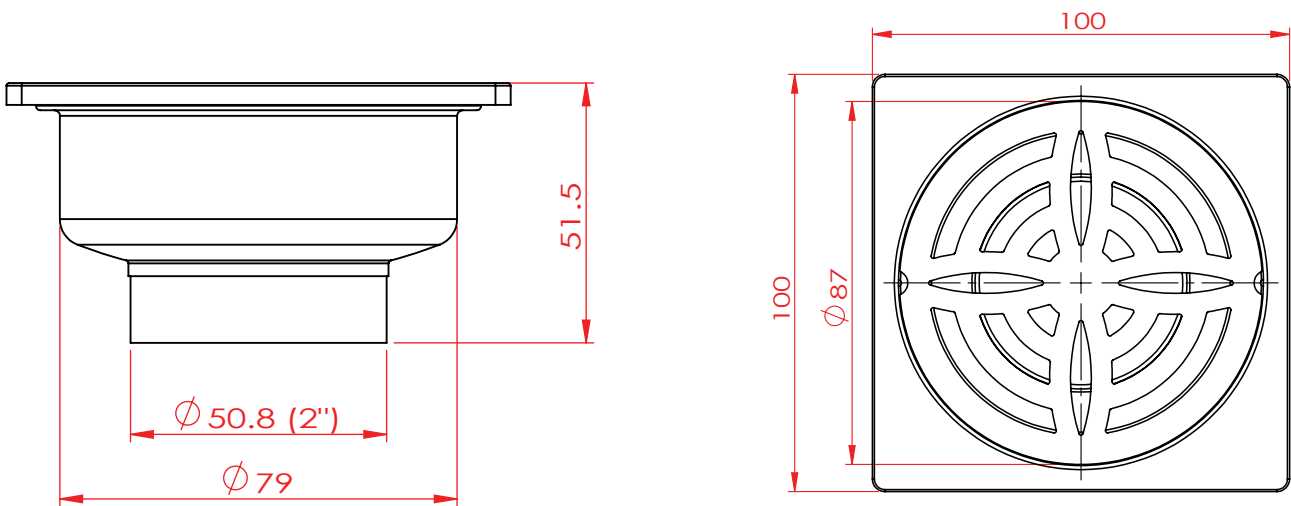
Item Code	Description
2S09PW-A	Square Floor Drain 9x9 cm. With connected pipe, Outlet 1 1/2"



**MOONLER**

QUALITY OF LIFE

STAINLESS STEEL 304

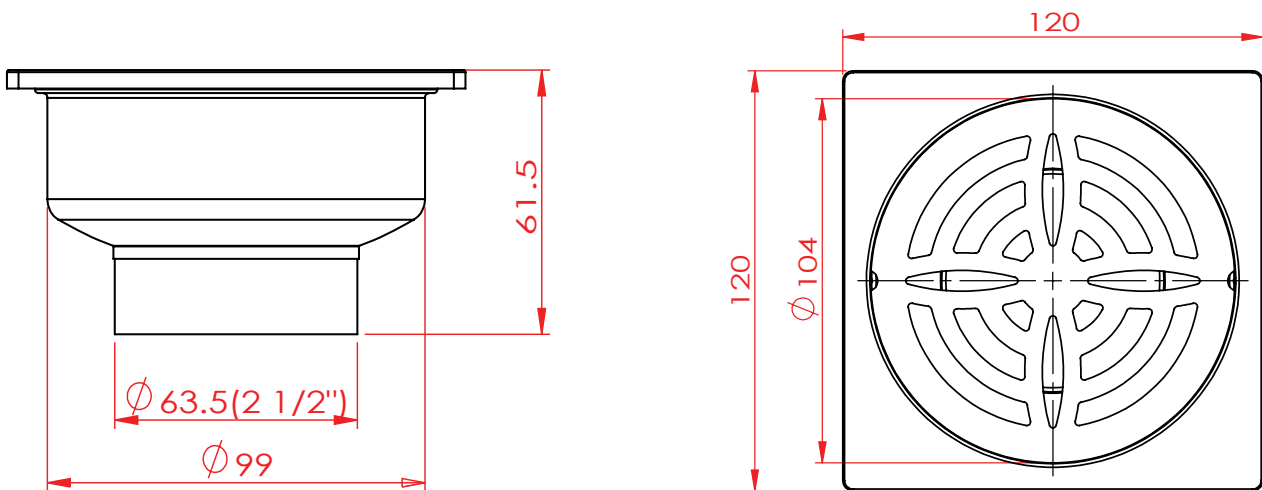


Item Code	Description
2S10PW-A	Square Floor Drain 10x10 cm. With connected pipe, Outlet 2"



**MOONLER**

QUALITY OF LIFE  
STAINLESS STEEL 304

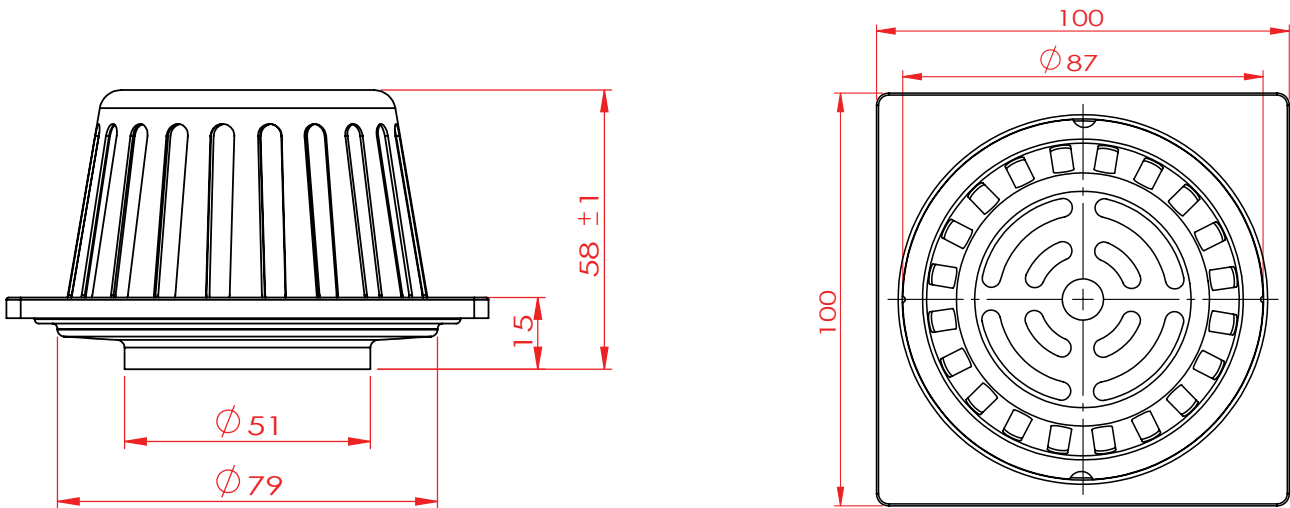


Item Code	Description
2S12PW-A	Square Floor Drain 12x12 cm. With connected pipe, Outlet 2 1/2"



**MOONLER**

QUALITY OF LIFE  
STAINLESS STEEL 304



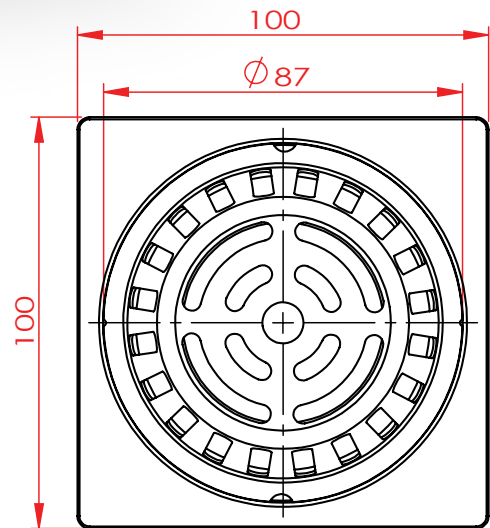
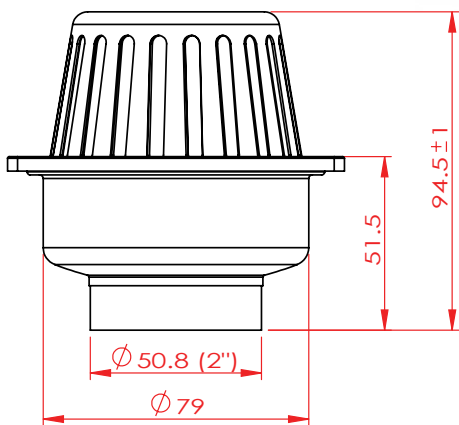
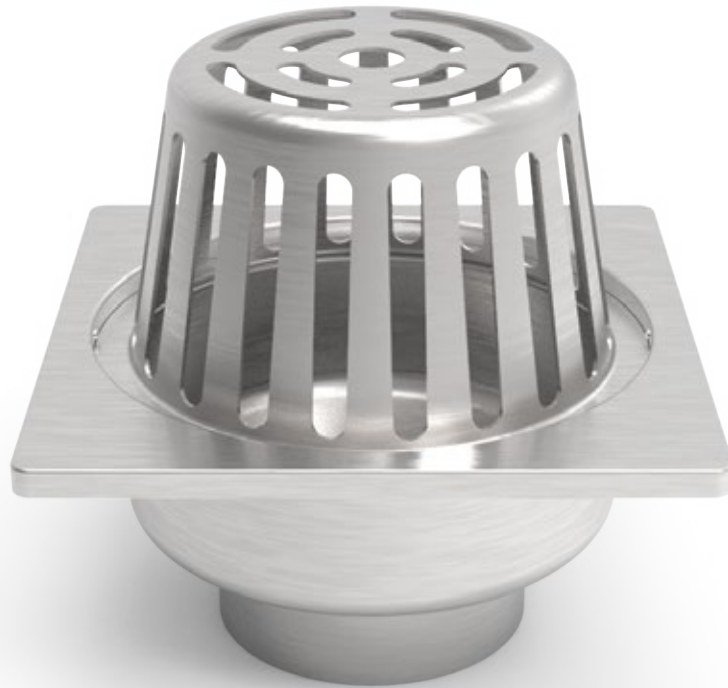
Item Code	Description
2S10PP2-G	Roof Drain 10x10 cm. Outlet 2"





**MOONLER**

QUALITY OF LIFE  
STAINLESS STEEL 304

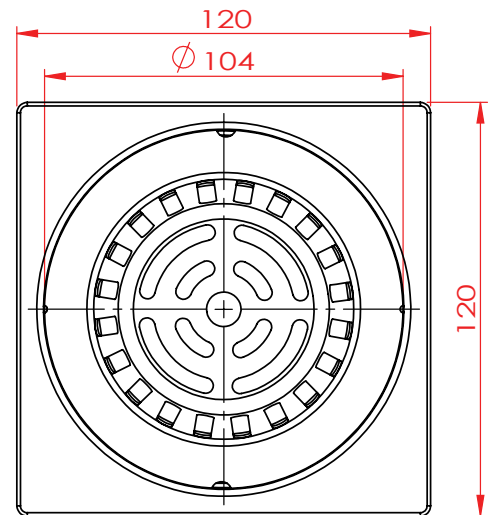
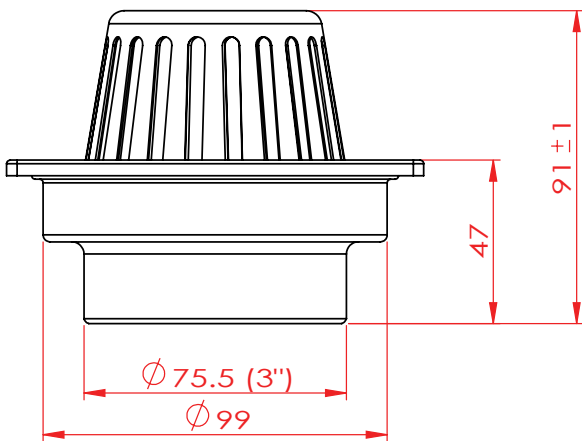


Item Code	Description
2S10PW-G	Square Floor Drain 12x12 cm. With connected pipe, Outlet 2 1/2"



**MOONLER**

QUALITY OF LIFE  
STAINLESS STEEL 304

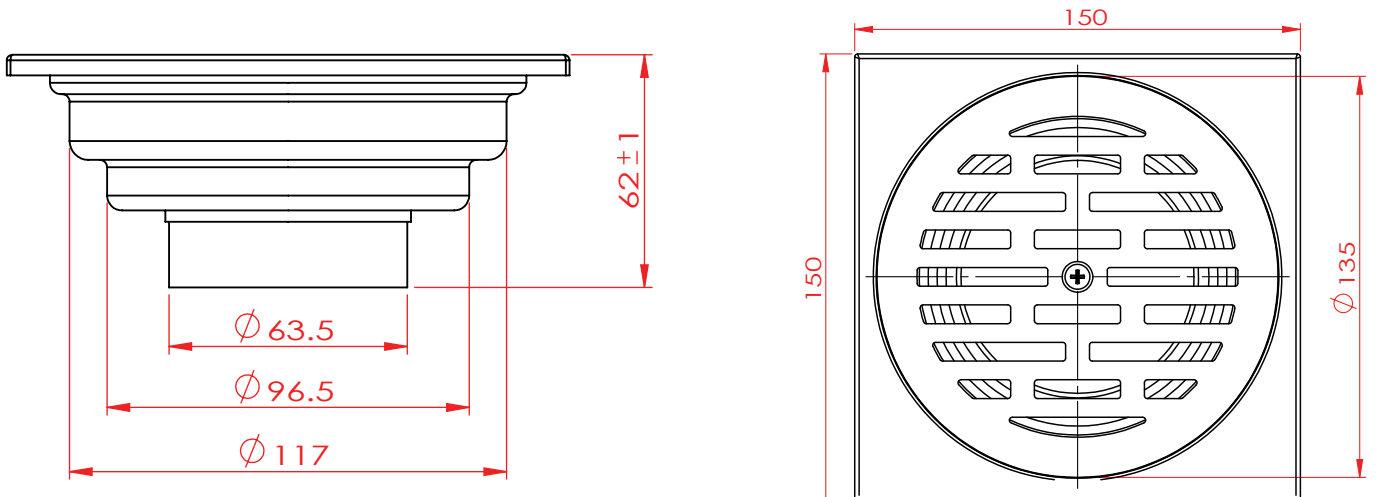


Item Code	Description
2S12PPW-G	Roof Drain 12x12 cm. With connected pipe, Outlet 3"



**MOONLER**

QUALITY OF LIFE  
STAINLESS STEEL 304

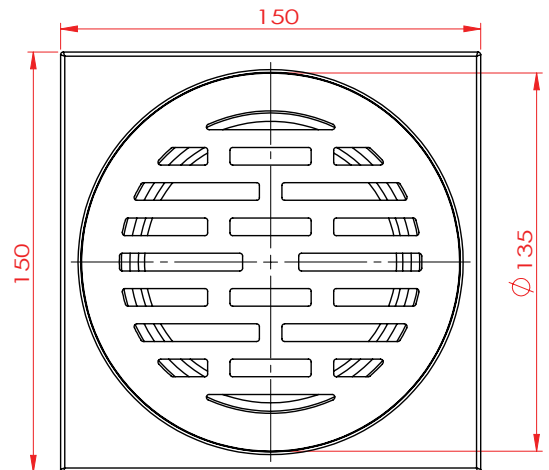
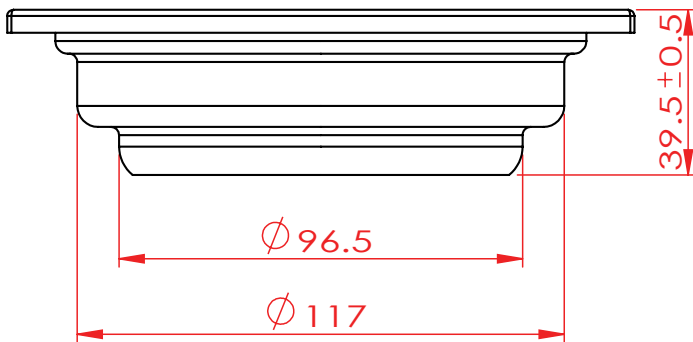


Item Code	Description
2S15PX-E	Square Anti-odour Floor Drain 15X15 cm. With connected pipe, Outlet 2 1/2"



**MOONLER**

QUALITY OF LIFE  
STAINLESS STEEL 304



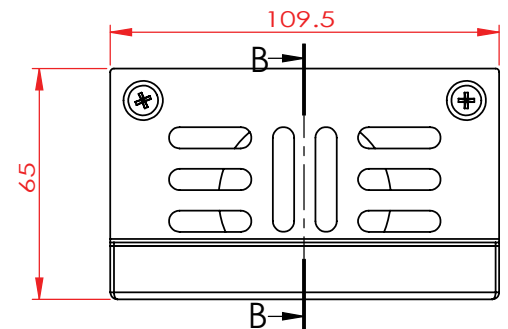
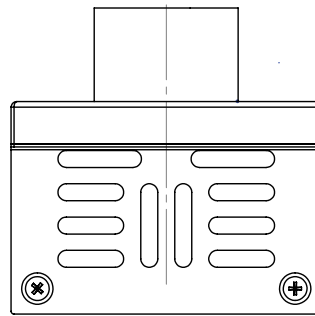
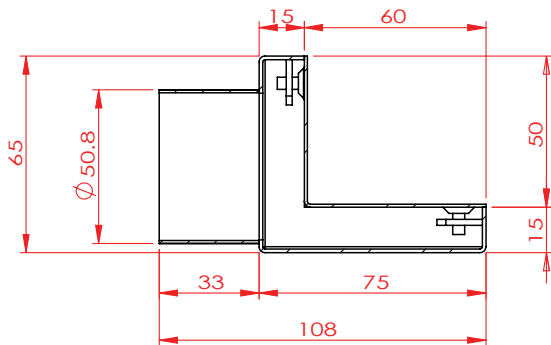
Item Code	Description
2S15PPW-E	Square Floor Drain 15x15 cm. Outlet 4-5"



**MOONLER**

QUALITY OF LIFE

STAINLESS STEEL 304



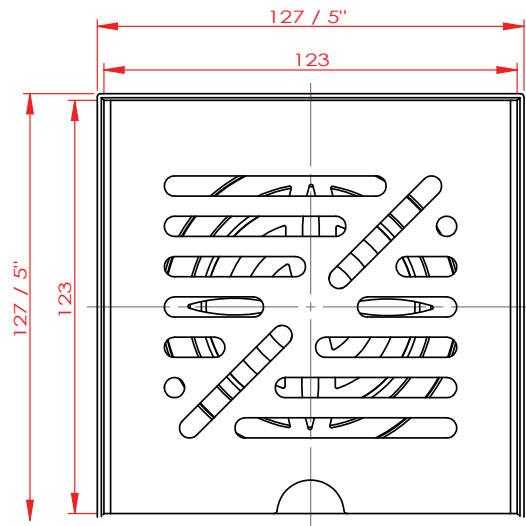
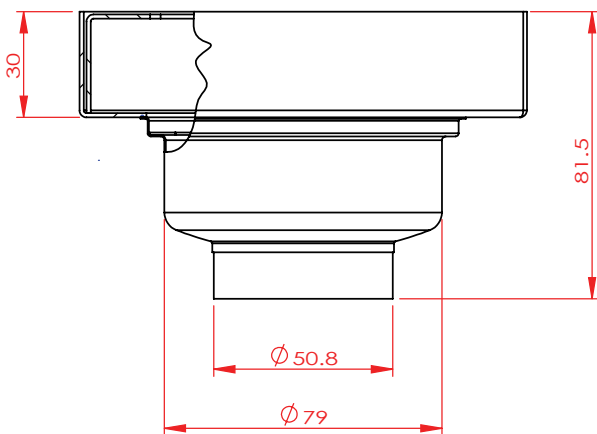
Item Code	Description
1L65x75PW2-B	Side Floor Drain 65x75 mm. With connected pipe, Outlet 2"



**MOONLER**

QUALITY OF LIFE

STAINLESS STEEL 304



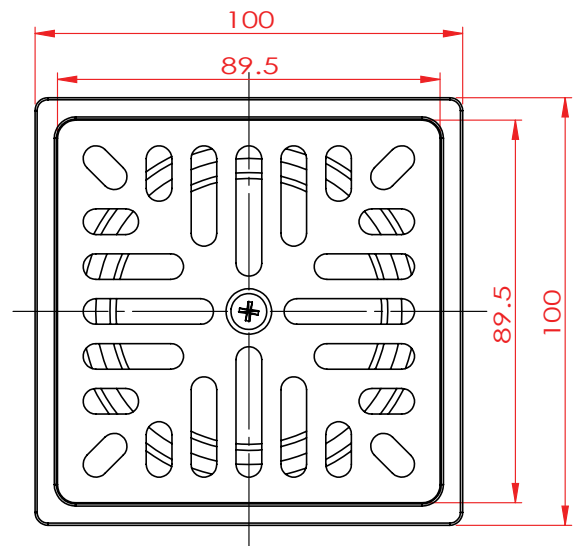
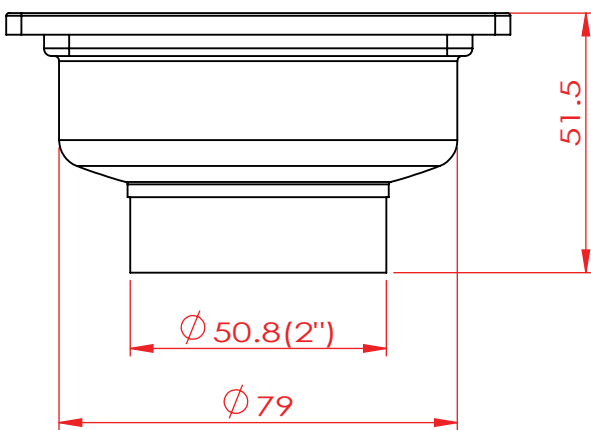
Item Code	Description
225P-A5x5P2	Square Anti-odour Floor Drain 12x12 cm. With connected pipe, Outlet 2 1/2"



**MOONLER**

QUALITY OF LIFE

STAINLESS STEEL 304



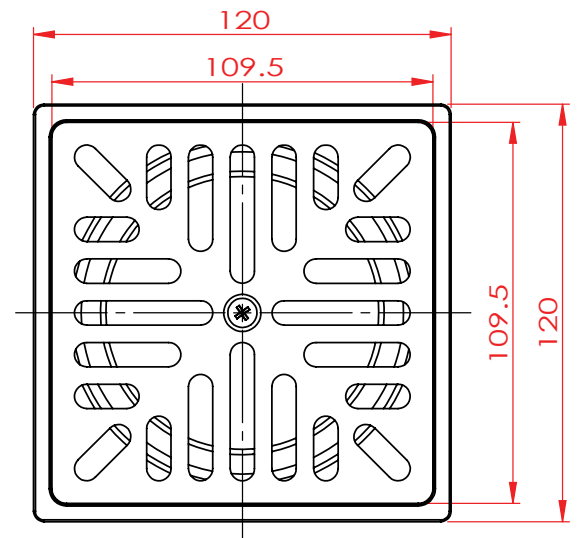
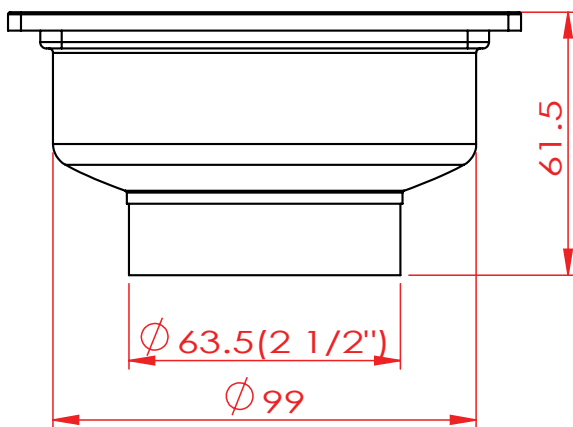
Item Code	Description
1S10PX-M	Square Anti-odour Floor drain 10x10 cm. With connected pipe, Outlet 2"



**MOONLER**

QUALITY OF LIFE

STAINLESS STEEL 304



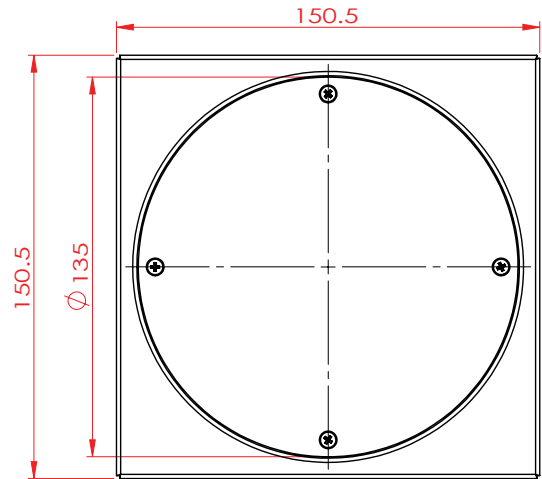
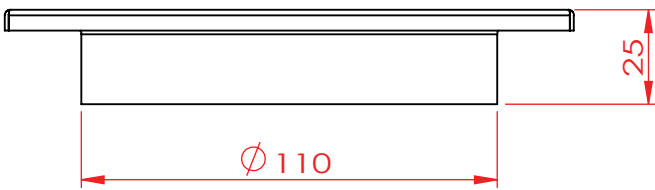
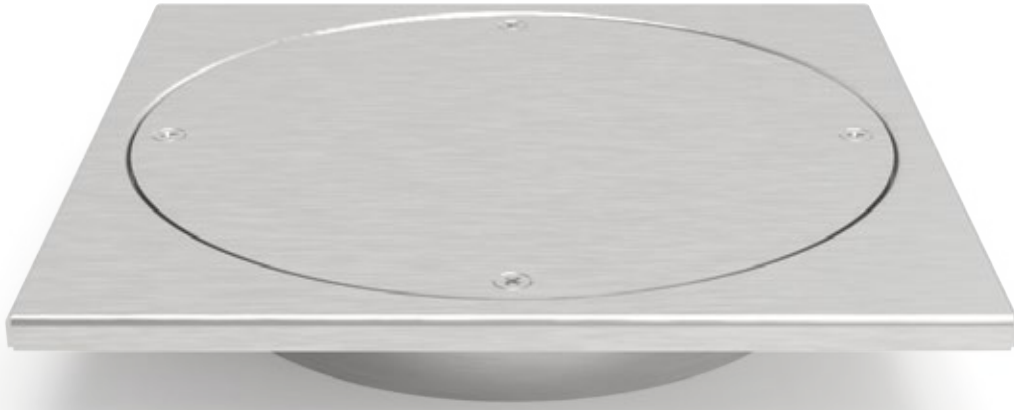
Item Code	Description
1S12PX-M	Square Anti-odour Floor Drain 12x12 cm. With connected pipe, Outlet 2 1/2"





**MOONLER**

QUALITY OF LIFE  
STAINLESS STEEL 304

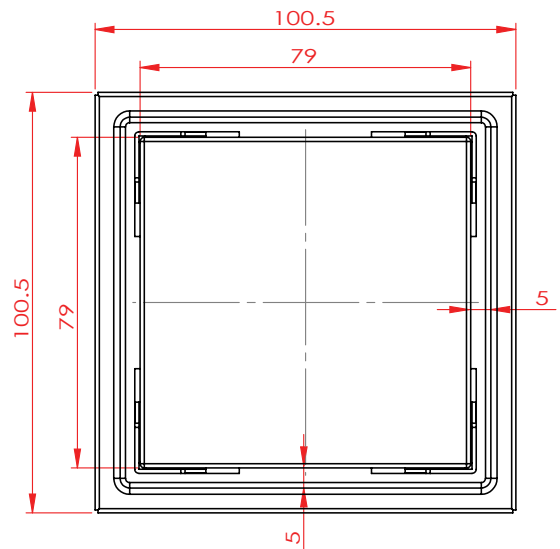
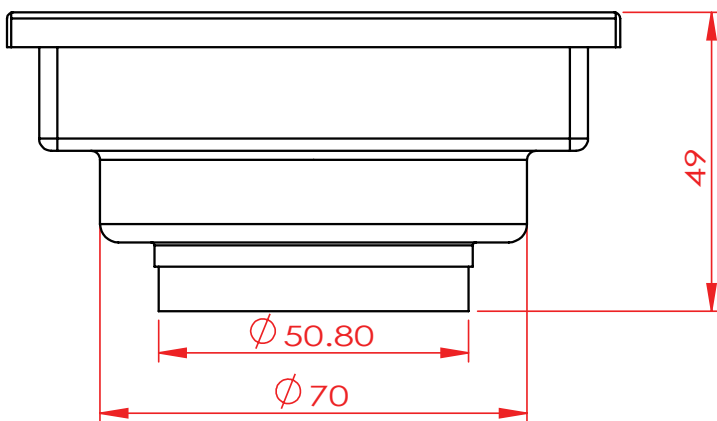


Item Code	Description
7S15P11	Cleanout 15x15 cm. Outlet 5"



**MOONLER**

QUALITY OF LIFE  
STAINLESS STEEL 304

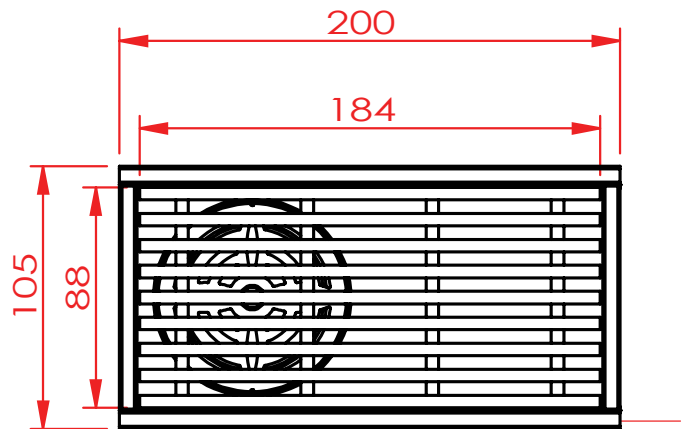
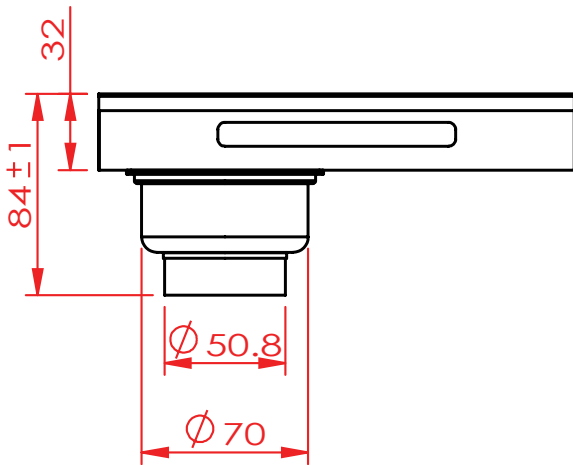


Item Code	Description
3R10PX2-N	Heavy Duty Square Floor Drain 10x10 cm. Outlet 2"



**MOONLER**

QUALITY OF LIFE  
STAINLESS STEEL 304

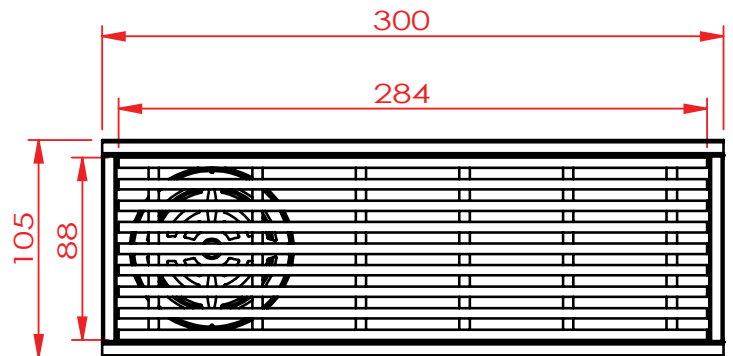
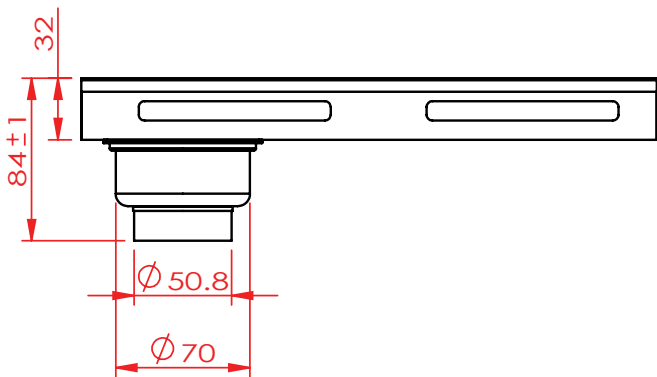


Item Code	Description
3R20PX2-D-N	Heavy Duty Channel Drain 10x20 cm. Outlet 2"



**MOONLER**

QUALITY OF LIFE  
STAINLESS STEEL 304

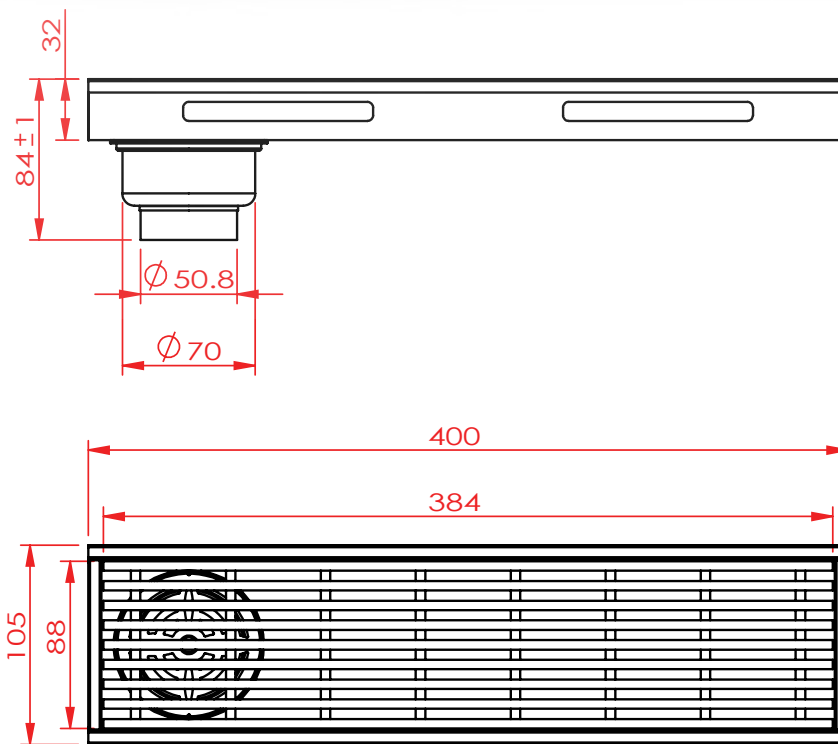


Item Code	Description
3R30PX2-D-N	Heavy Duty Channel Drain 10x30 cm. Outlet 2"



**MOONLER**

QUALITY OF LIFE  
STAINLESS STEEL 304



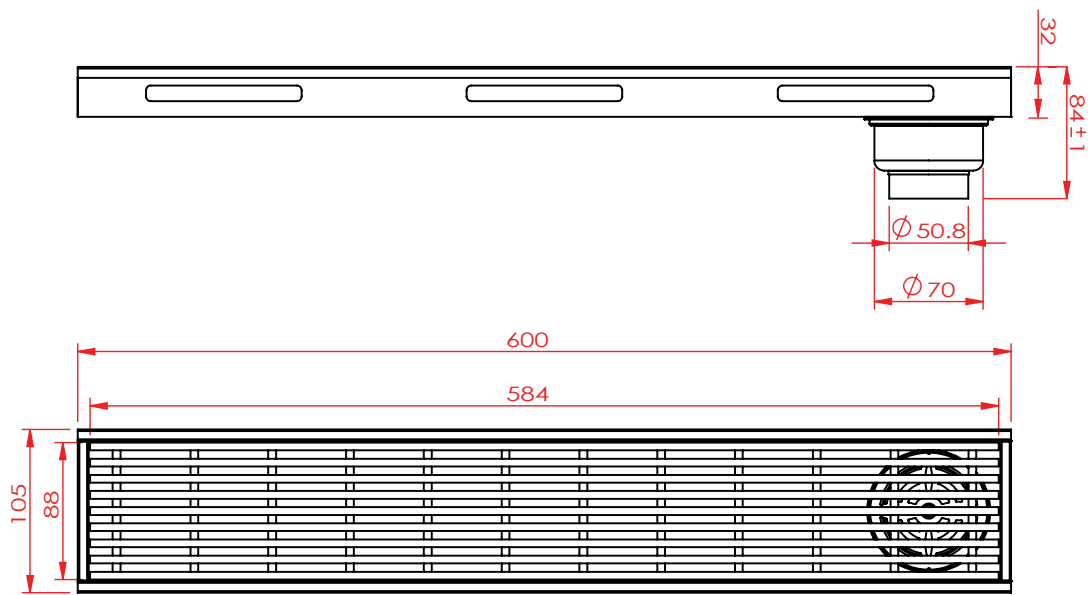
Item Code	Description
3R40PX2-D-N	Heavy Duty Channel Drain 10x40 cm. Outlet 2"



**MOONLER**

QUALITY OF LIFE

STAINLESS STEEL 304



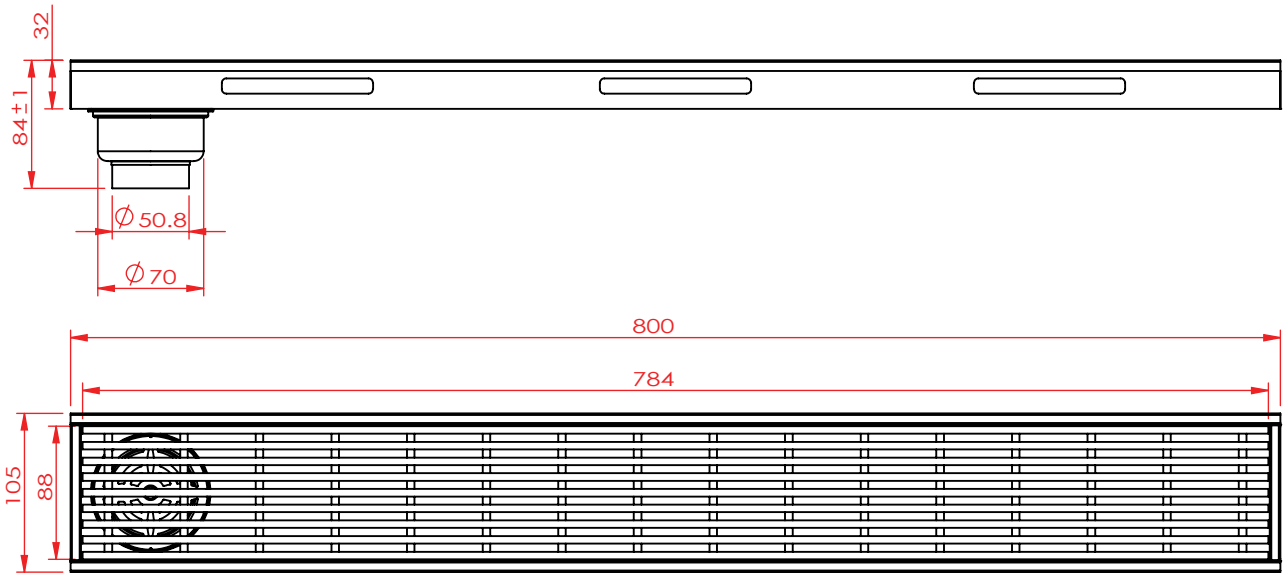
Item Code	Description
3R60PX2-D-N	Heavy Duty Channel Drain 10x60 cm. Outlet 2"



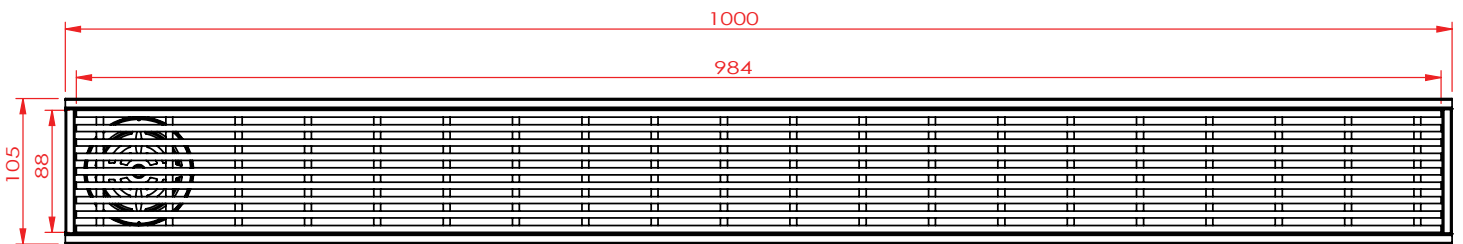
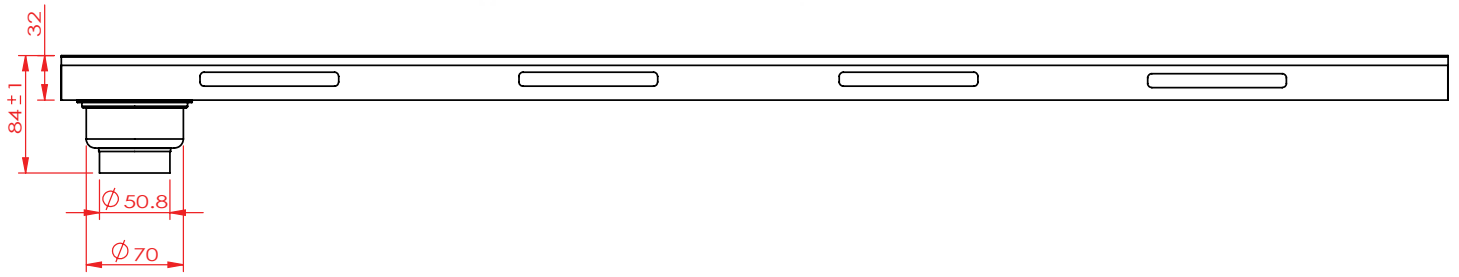
**MOONLER**

QUALITY OF LIFE

STAINLESS STEEL 304



Item Code	Description
3R80PX2-D-N	Heavy Duty Channel Drain 10x80 cm. Outlet 2"



Item Code	Description
3R100PX2-D-N	Heavy Duty Channel Drain 10x100 cm. Outlet 2"

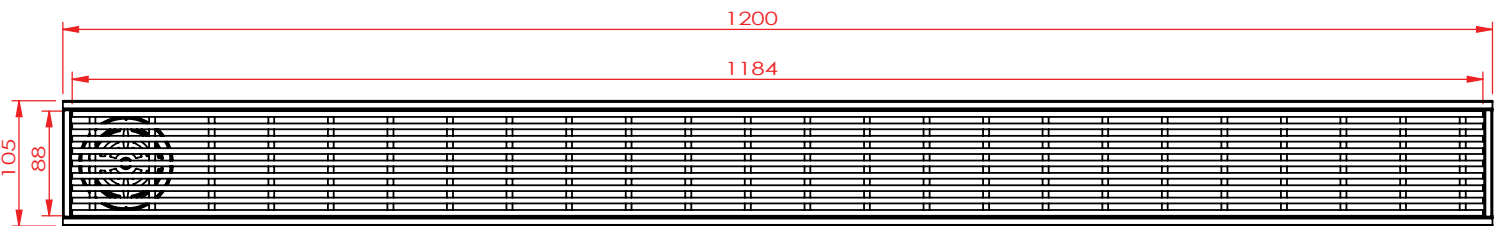
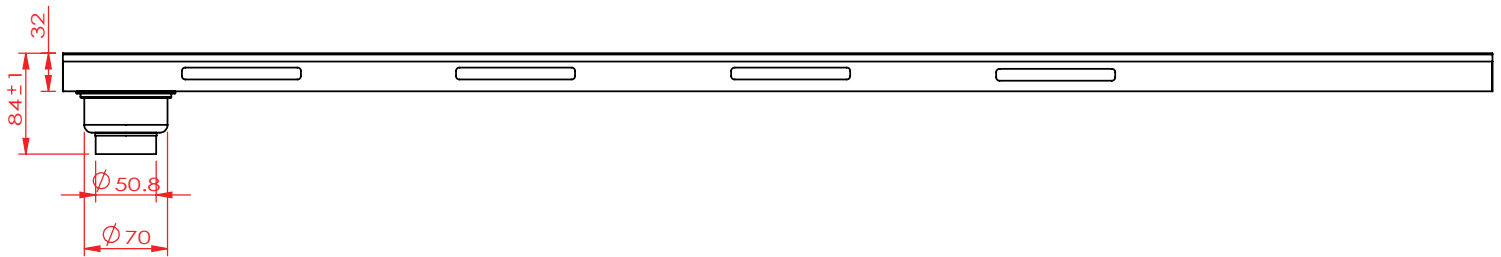




**MOONLER**

QUALITY OF LIFE

STAINLESS STEEL 304



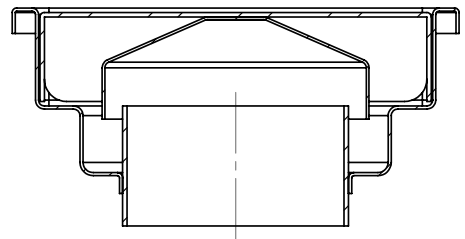
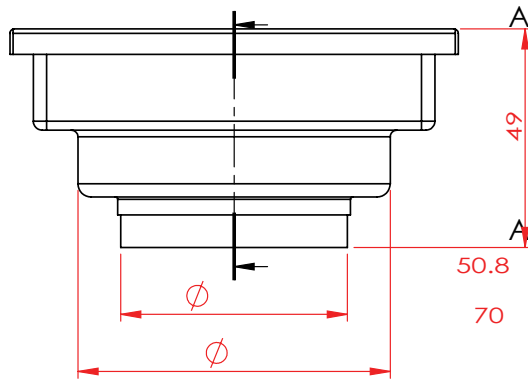
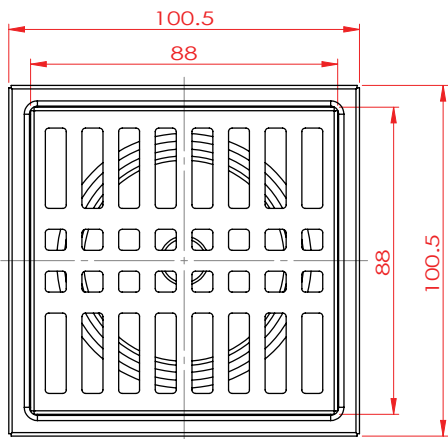
Item Code	Description
3R120PX2-D-N	Heavy Duty Channel Drain 10x120 cm. Outlet 2"



**MOONLER**

QUALITY OF LIFE

STAINLESS STEEL 304

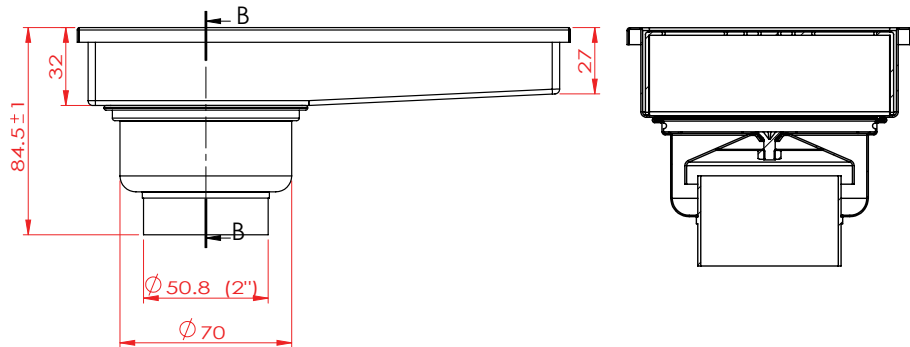
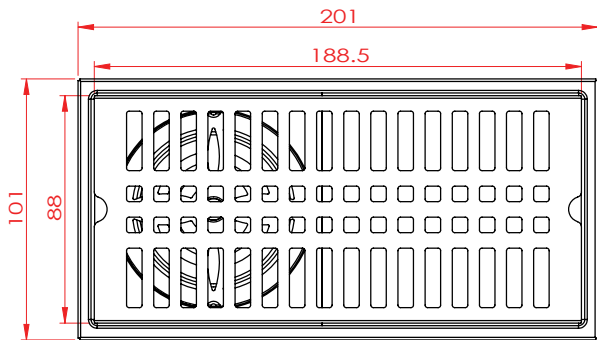
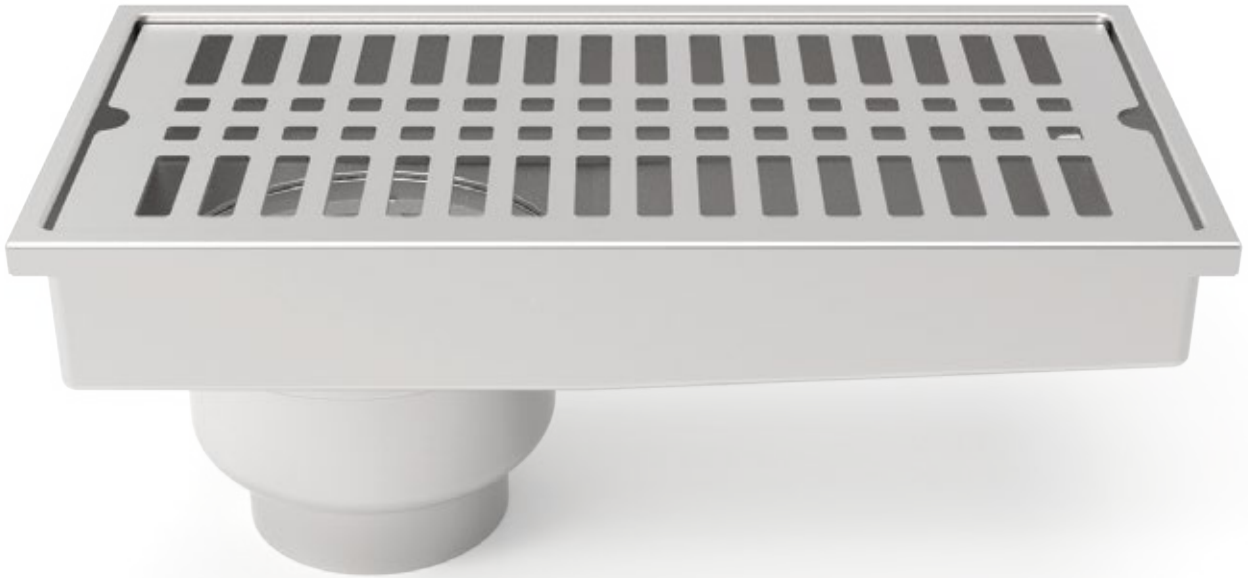


Item Code	Description
3R10PX-D-1	Square Anti-odour Floor Drain 10X10 cm. With connected pipe, Outlet 2"



**MOONLER**

QUALITY OF LIFE  
STAINLESS STEEL 304

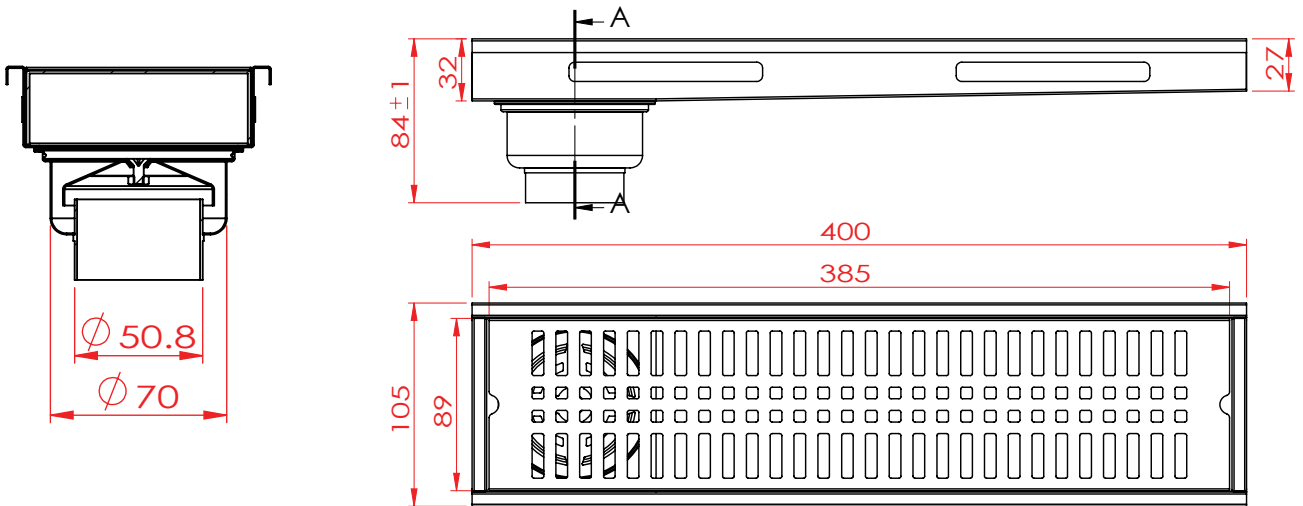
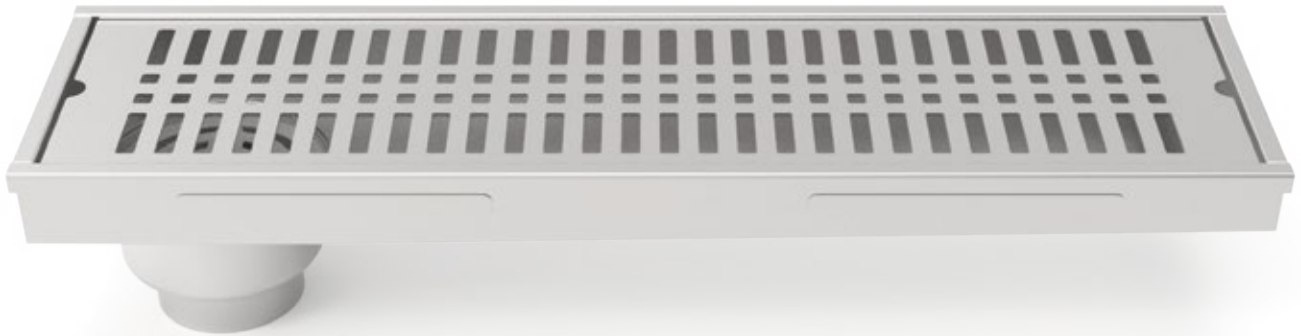


Item Code	Description
3R20PX-A-D-1	Anti-odour Channel Drain 10x20 cm. With connected pipe, Outlet 2"



**MOONLER**

QUALITY OF LIFE  
STAINLESS STEEL 304

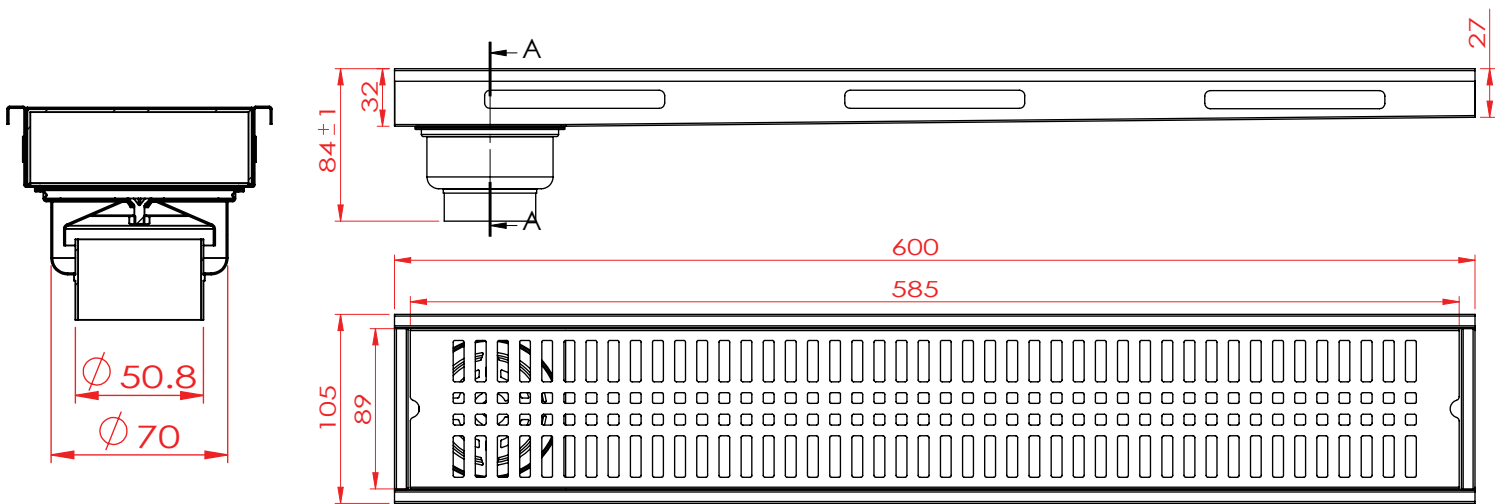


Item Code	Description
3R40PX-A-D-1	Anti-odour Channel Drain 10x40 cm. With connected pipe, Outlet 2"



**MOONLER**

QUALITY OF LIFE  
STAINLESS STEEL 304



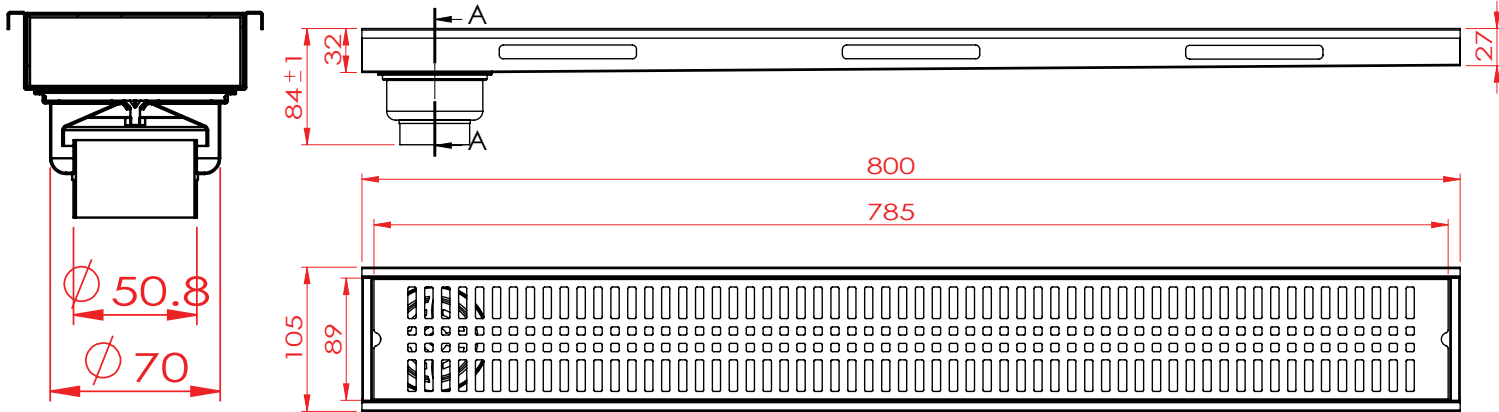
Item Code	Description
3R60PX-A-D-1	Anti-odour Channel Drain 10x60 cm. With connected pipe, Outlet 2"



**MOONLER**

QUALITY OF LIFE

STAINLESS STEEL 304



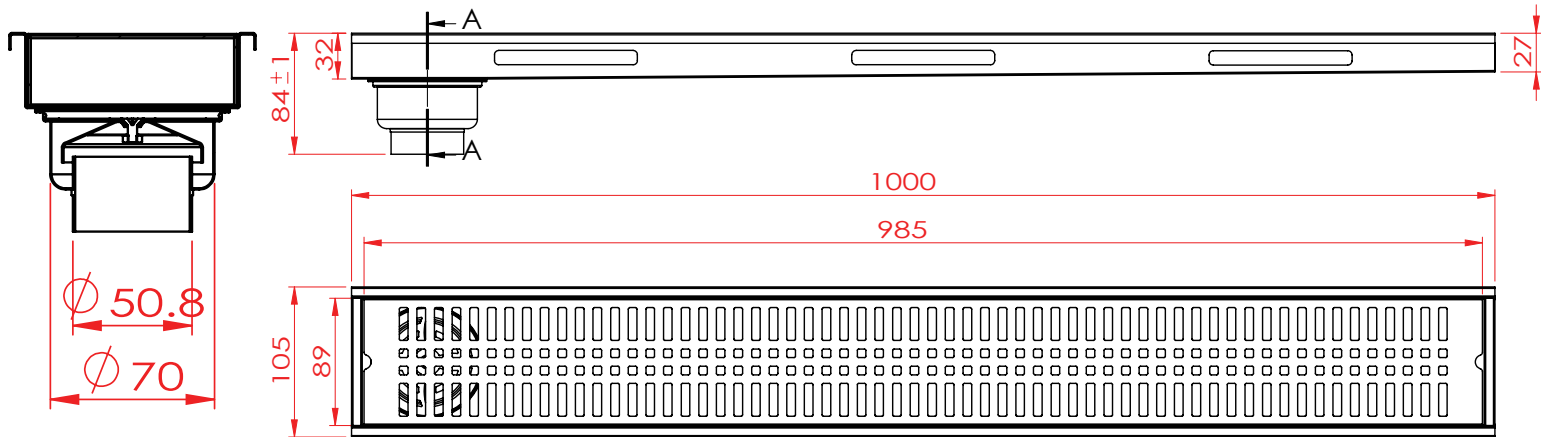
Item Code	Description
3R80PX-A-D-1	Anti-odour Channel Drain 10x80 cm. With connected pipe, Outlet 2"



**MOONLER**

QUALITY OF LIFE

STAINLESS STEEL 304



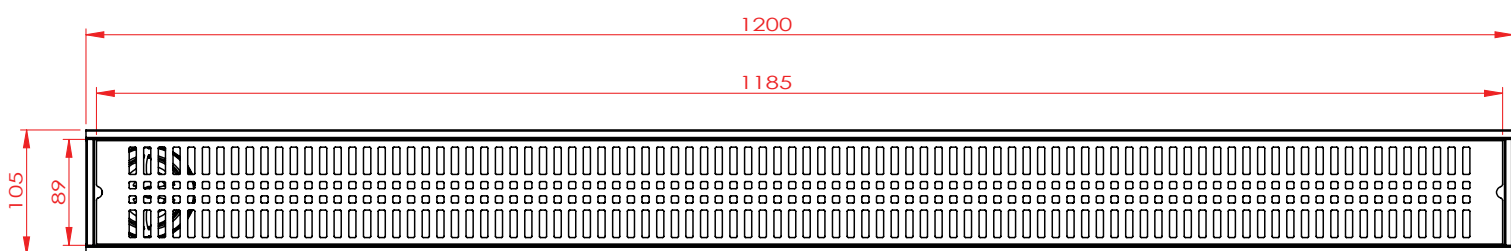
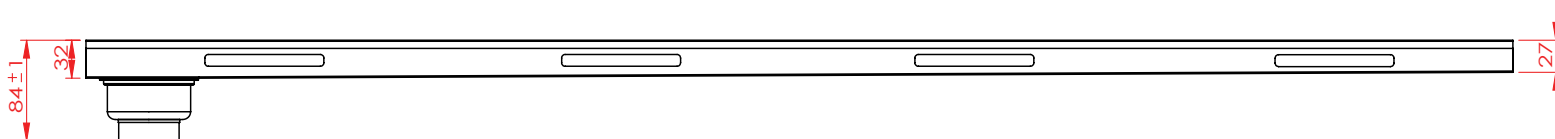
Item Code	Description
3R100PX-A-D-1	Anti-odour Channel Drain 10x100 cm. With connected pipe, Outlet 2"



**MOONLER**

QUALITY OF LIFE

STAINLESS STEEL 304



Item Code	Description
3R120PX-A-D-1	Anti-odour Channel Drain 10x120 cm. With connected pipe, Outlet 2"

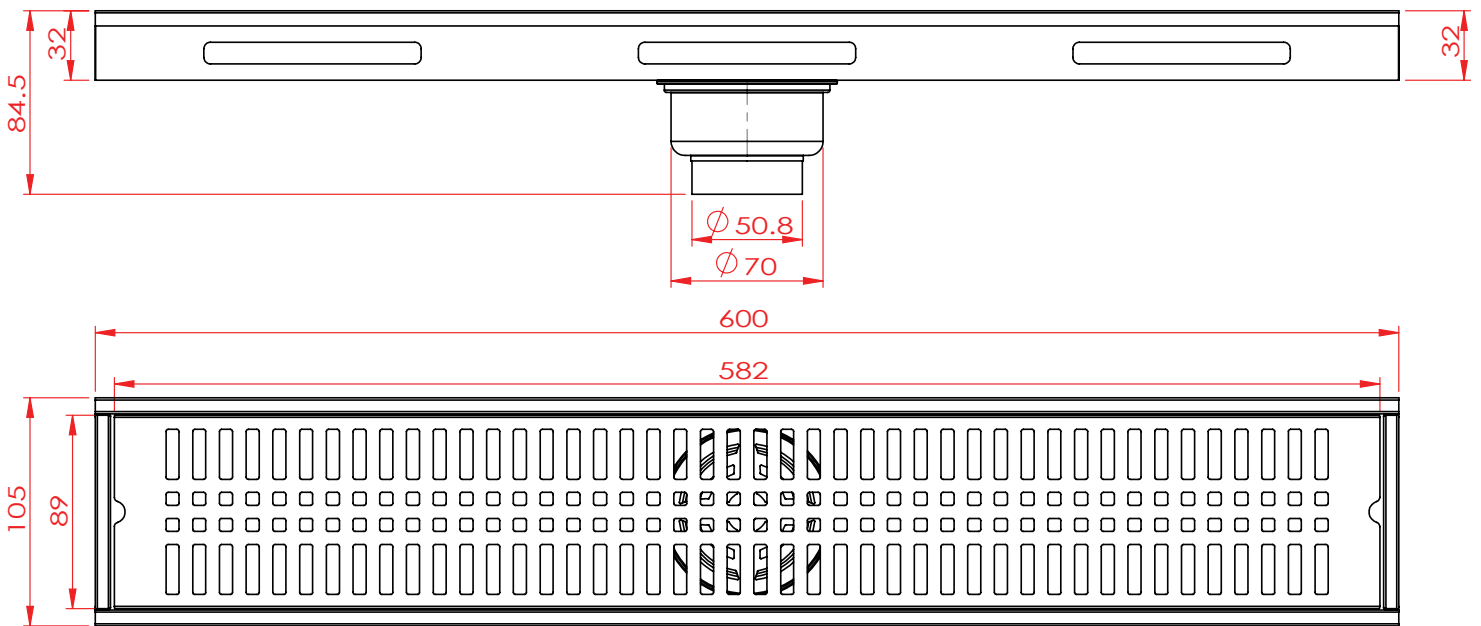




**MOONLER**

QUALITY OF LIFE

STAINLESS STEEL 304



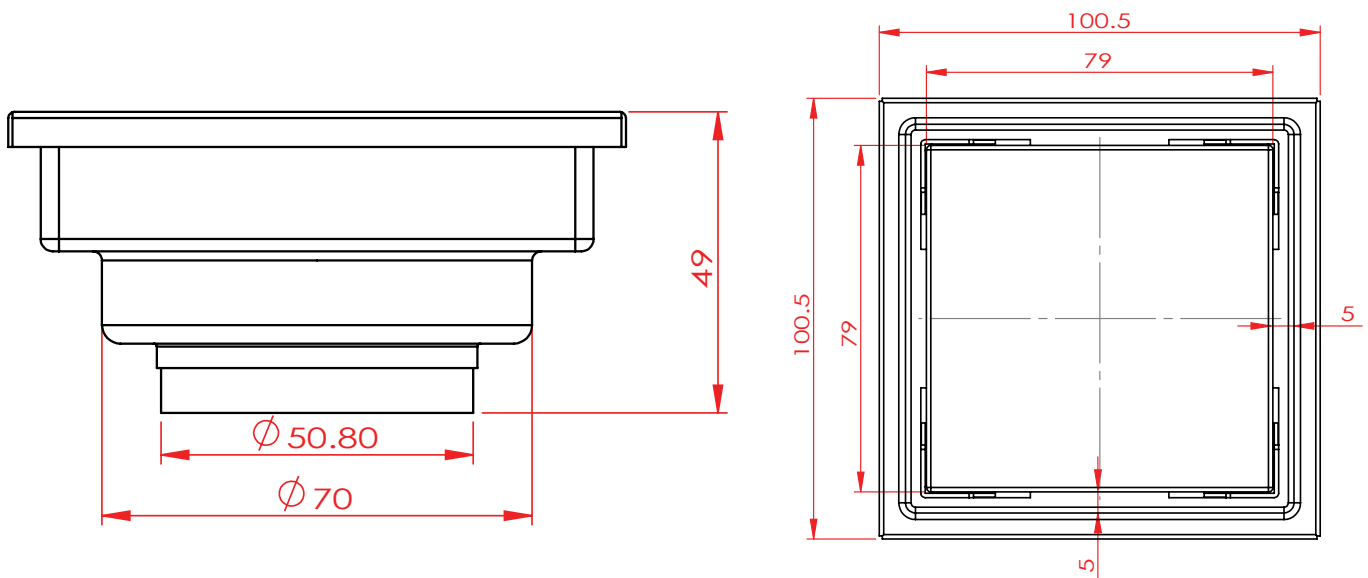
Item Code	Description
3R1 60PX-A-D	Anti-odour Channel Drain 10x40 cm. With connected pipe, Center Outlet 2"



**MOONLER**

QUALITY OF LIFE

STAINLESS STEEL 304

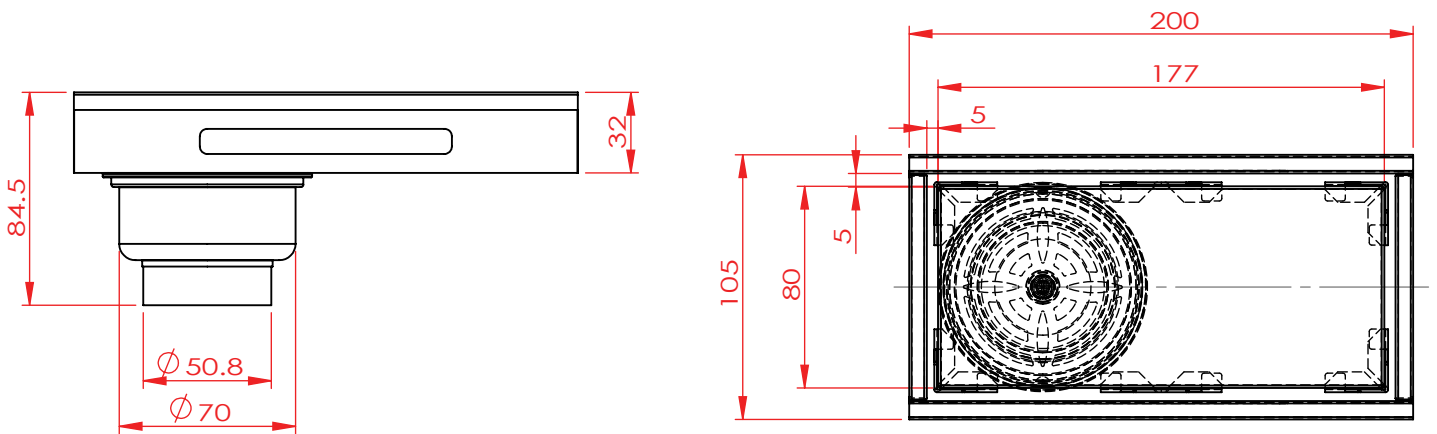


Item Code	Description
3R10PX2-non	Square Anti-odour Floor Drain 10X10 cm. With connected pipe, Outlet 2"



**MOONLER**

QUALITY OF LIFE  
STAINLESS STEEL 304

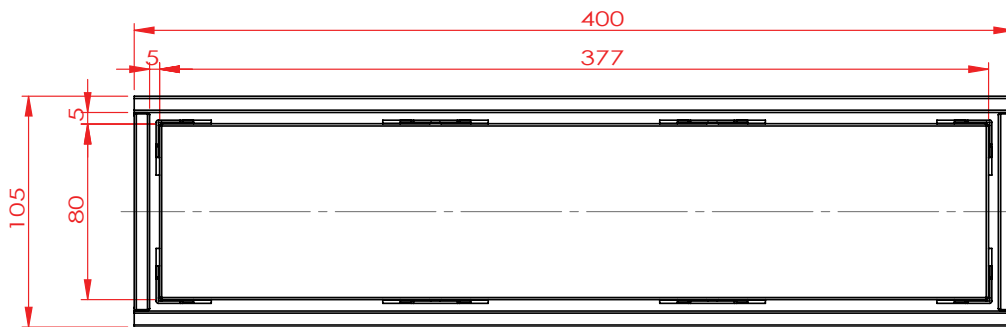
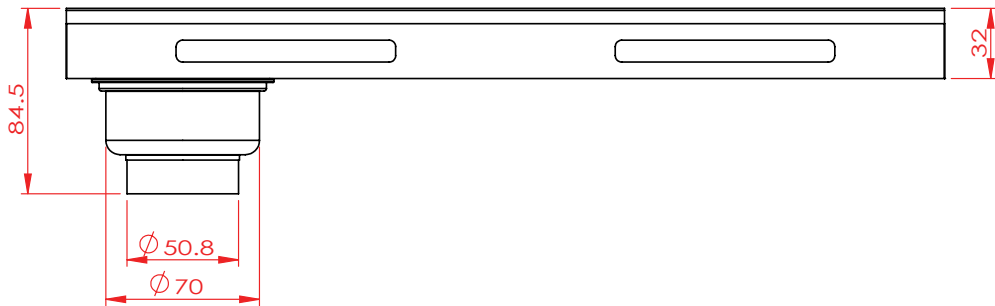


Item Code	Description
3R20PX2-non	Anti-odour Channel Drain 10x20 cm. With connected pipe, Outlet 2"



**MOONLER**

QUALITY OF LIFE  
STAINLESS STEEL 304

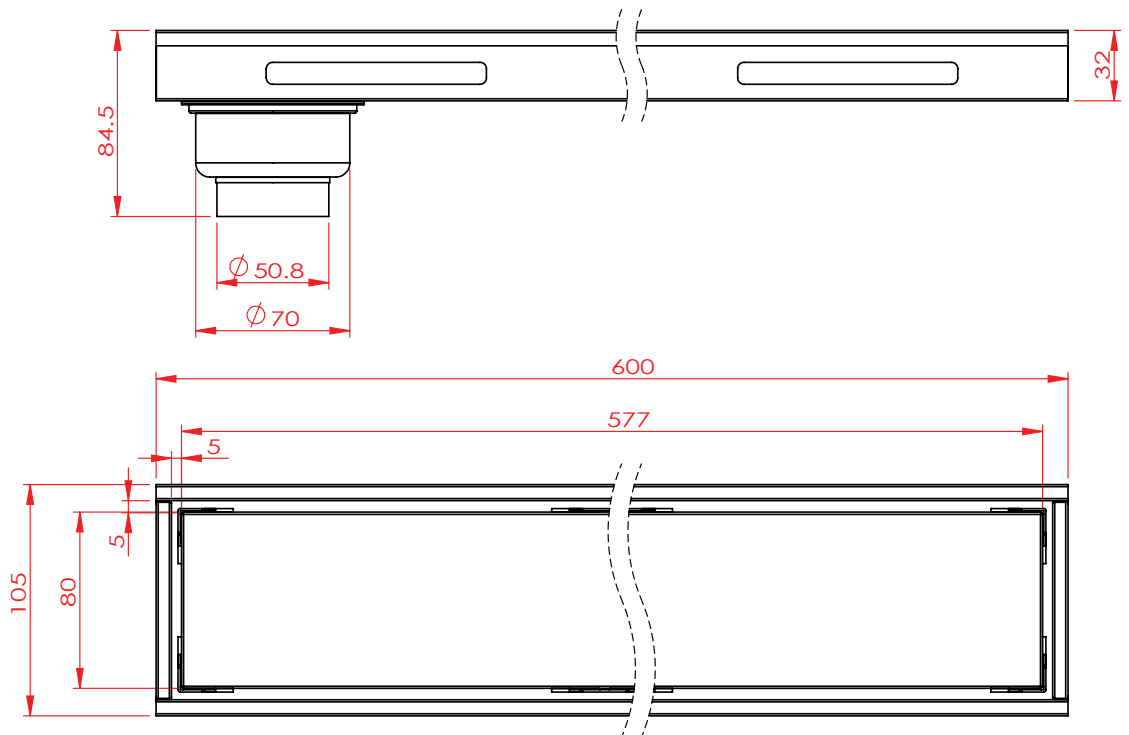


Item Code	Description
3R40PX2-non	Anti-odour Channel Drain 10x40 cm. With connected pipe, Outlet 2"



**MOONLER**

QUALITY OF LIFE  
STAINLESS STEEL 304



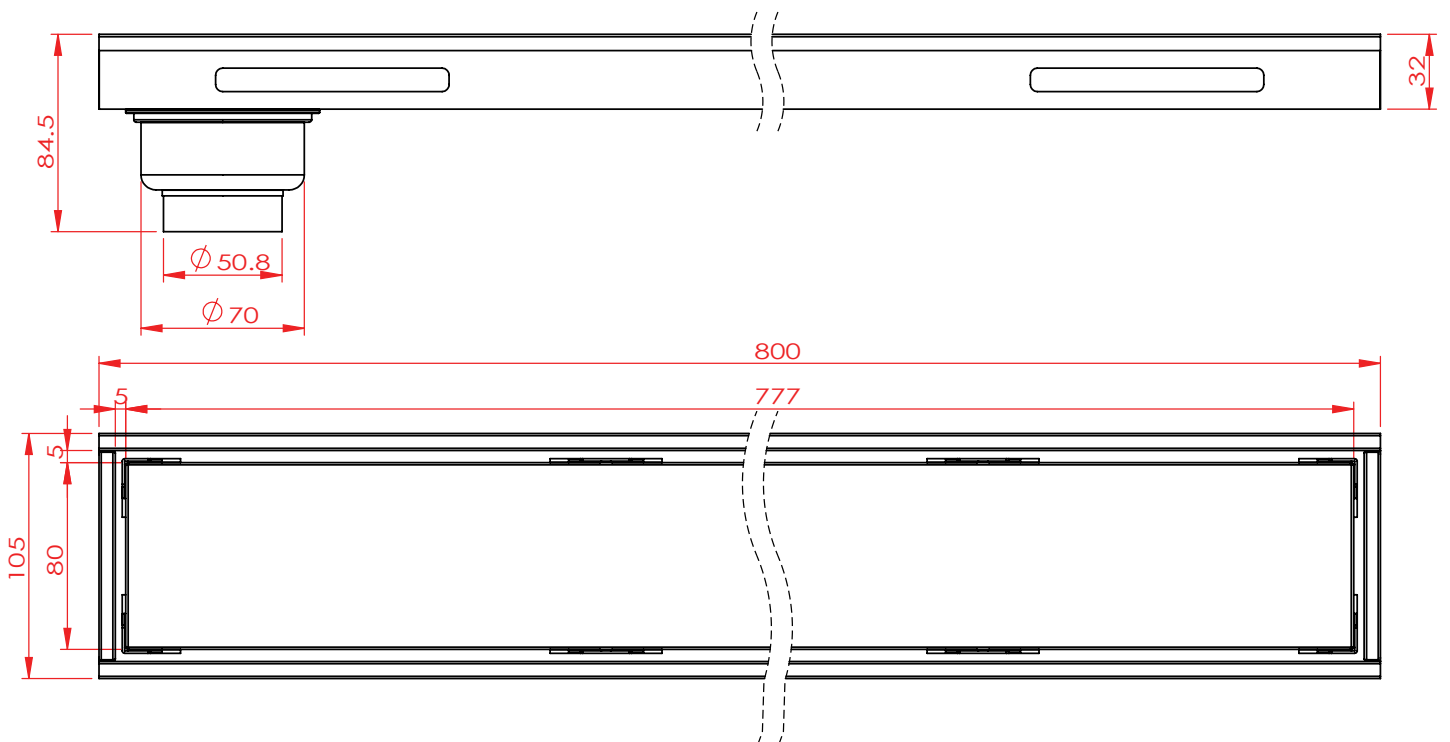
Item Code	Description
3R60PX2-non	Anti-odour Channel Drain 10x60 cm. With connected pipe, Outlet 2"



**MOONLER**

QUALITY OF LIFE

STAINLESS STEEL 304

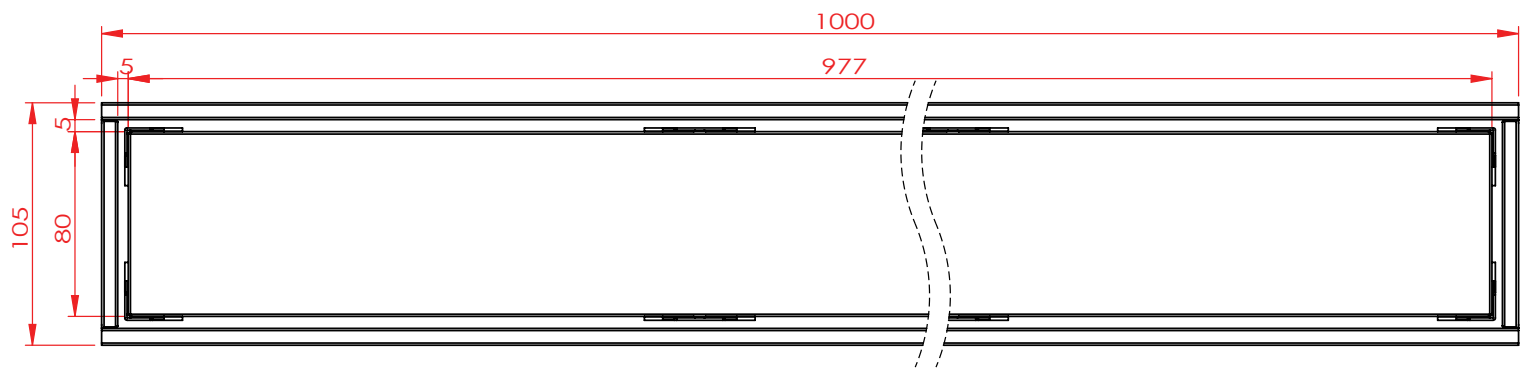
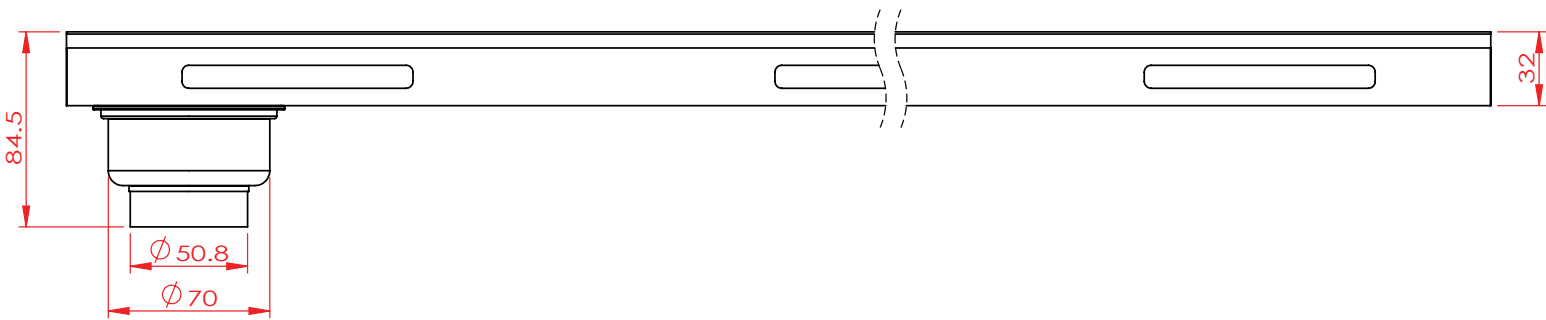


Item Code	Description
3R80PX2-non	Anti-odour Channel Drain 10x80 cm. With connected pipe, Outlet 2"



**MOONLER**

QUALITY OF LIFE  
STAINLESS STEEL 304



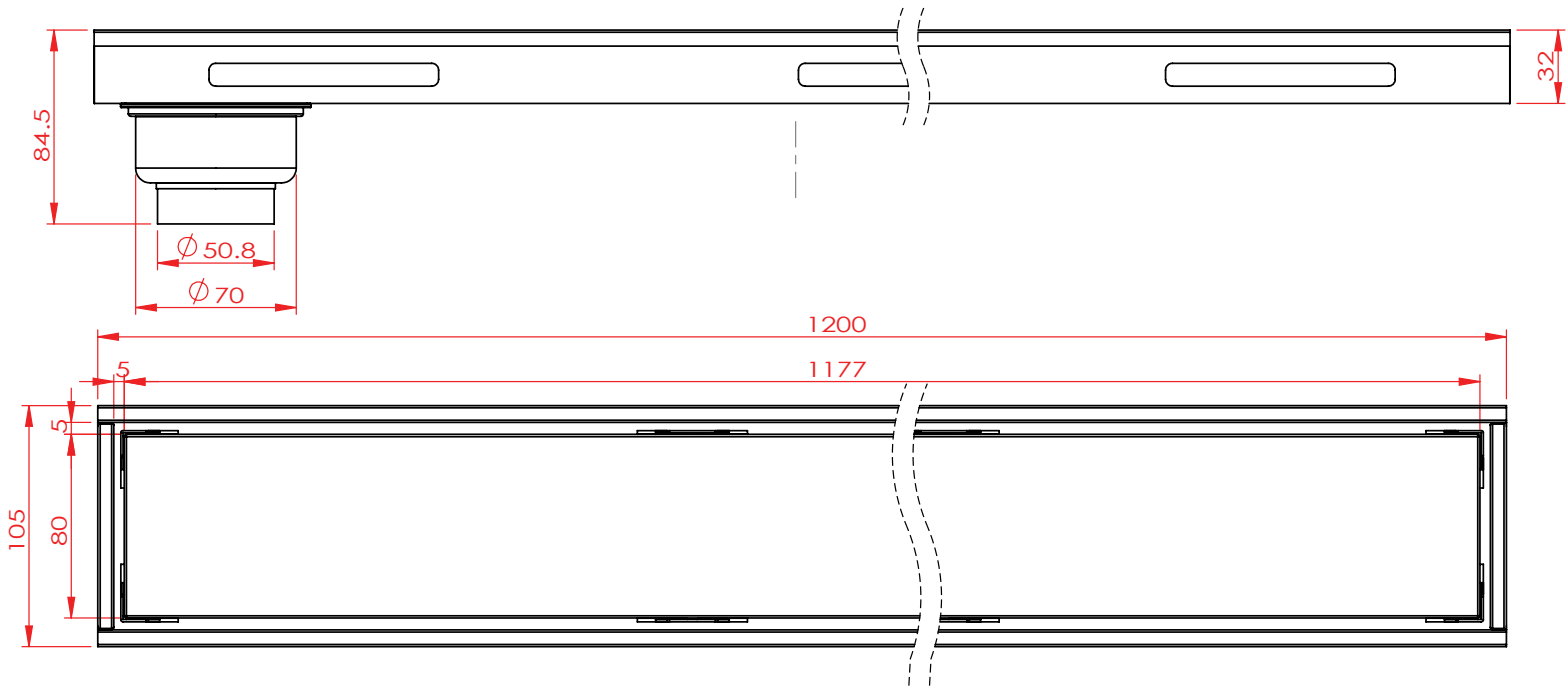
Item Code	Description
3R100PX2-non	Anti-odour Channel Drain 10x100 cm. With connected pipe, Outlet 2"



**MOONLER**

QUALITY OF LIFE

STAINLESS STEEL 304



Item Code	Description
3R120PX2-non	Anti-odour Channel Drain 10x120 cm. With connected pipe, Outlet 2"

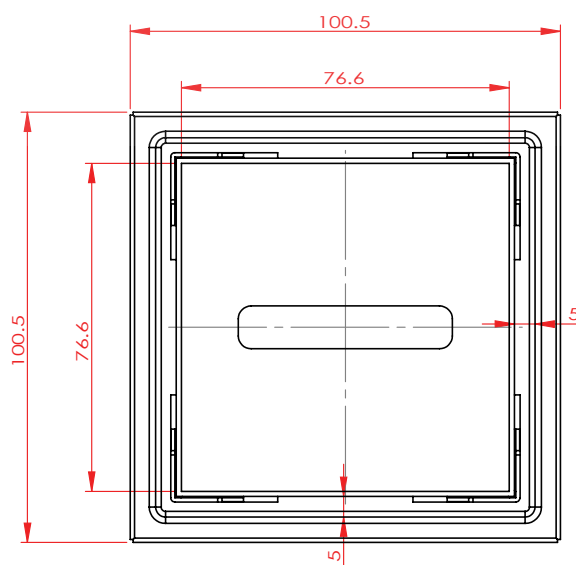
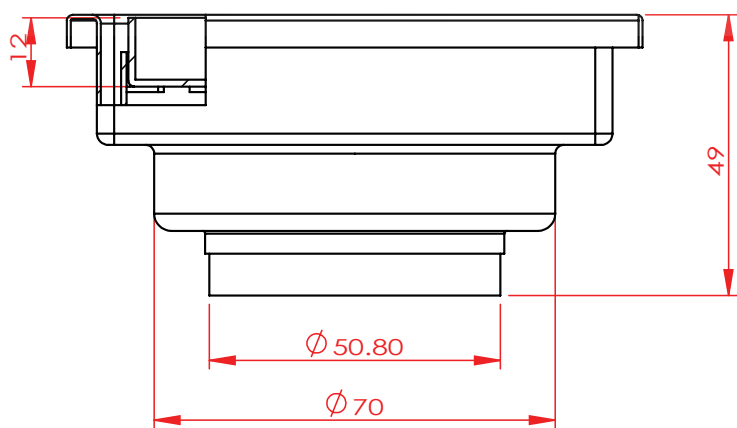




**MOONLER**

QUALITY OF LIFE

STAINLESS STEEL 304



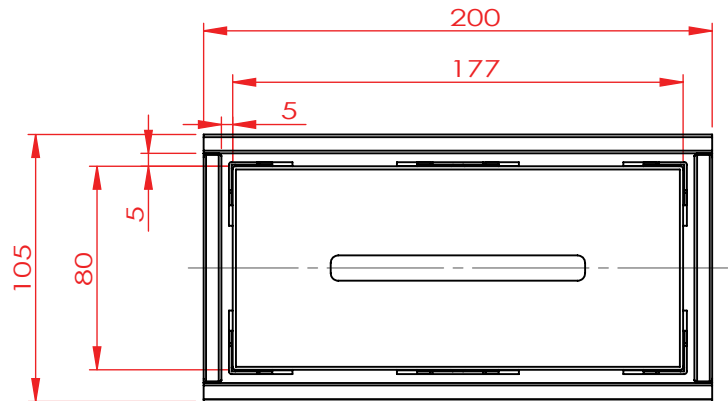
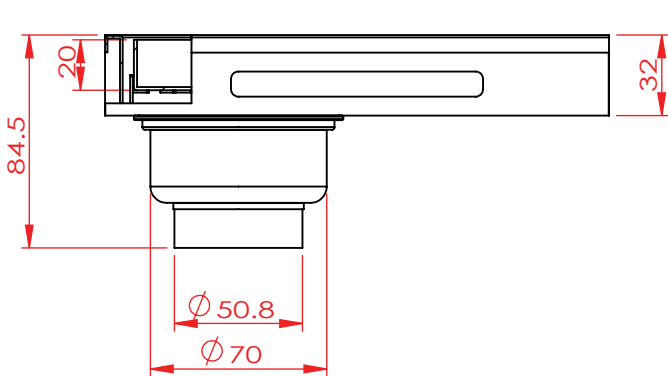
Item Code	Description
3R10PX2-tile	Square Anti-odour Tile Drain 10X10 cm. With connected pipe, Outlet 2"



**MOONLER**

QUALITY OF LIFE

STAINLESS STEEL 304

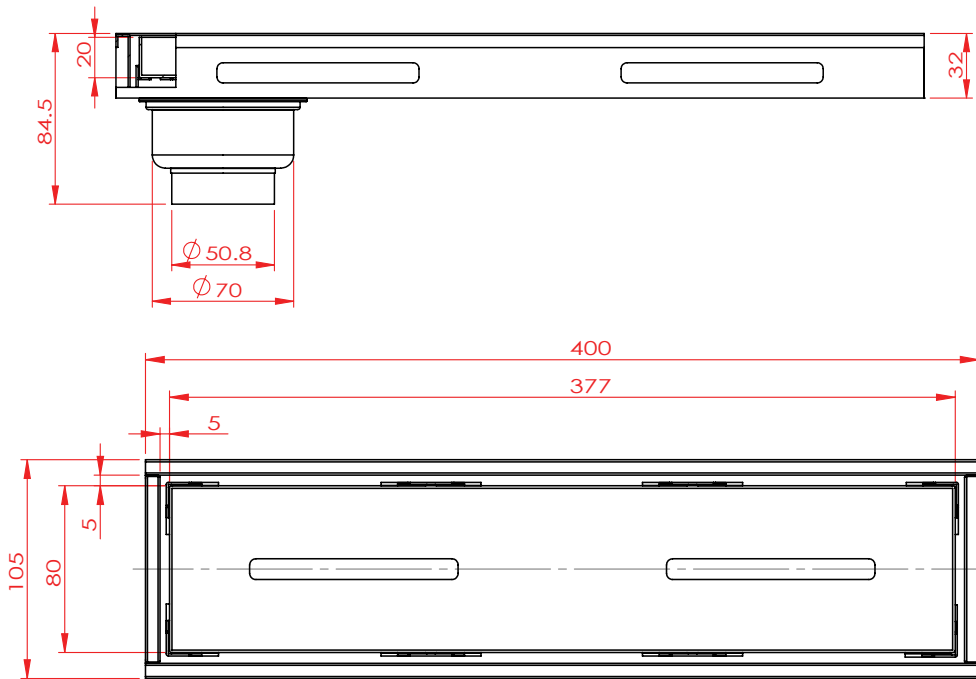


Item Code	Description
3R20PX2-tile	Anti-odour Tile Channel Drain 10x20 cm. With connected pipe, Outlet 2"



**MOONLER**

QUALITY OF LIFE  
STAINLESS STEEL 304

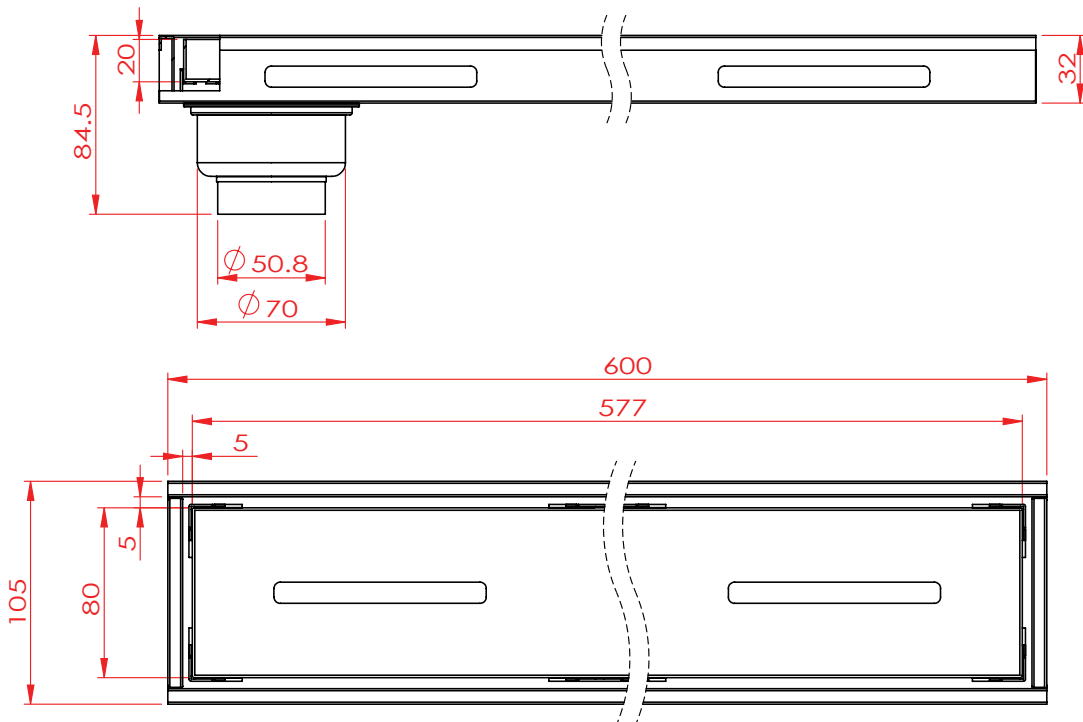


Item Code	Description
3R40PX2-tile	Anti-odour Tile Channel Drain 10x40 cm. With connected pipe, Outlet 2"



**MOONLER**

QUALITY OF LIFE  
STAINLESS STEEL 304

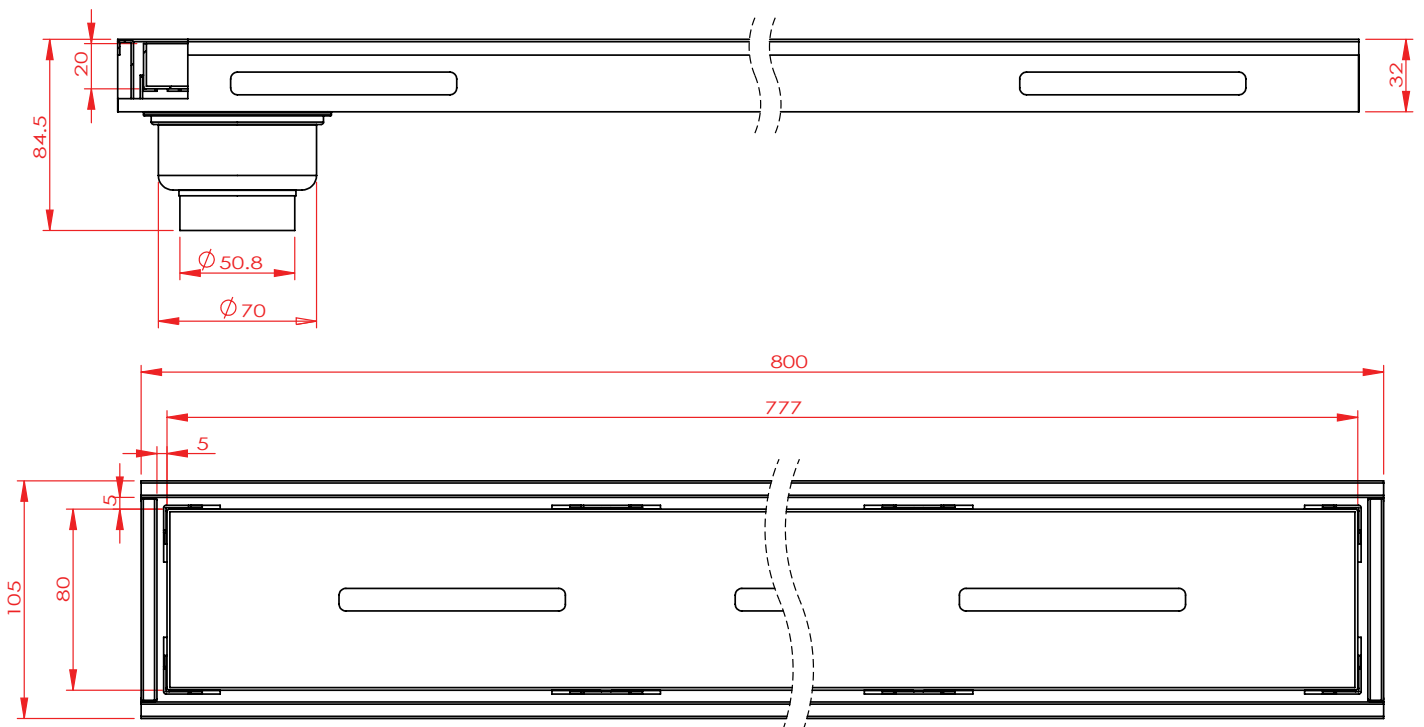


Item Code	Description
3R60PX2-tile	Anti-odour Tile Channel Drain 10x60 cm. With connected pipe, Outlet 2"



**MOONLER**

QUALITY OF LIFE  
STAINLESS STEEL 304



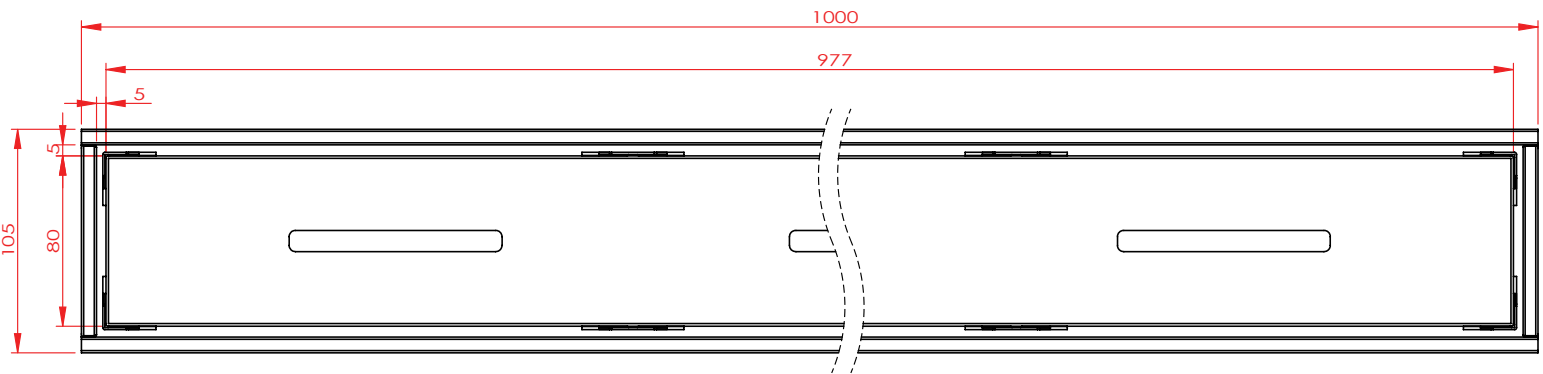
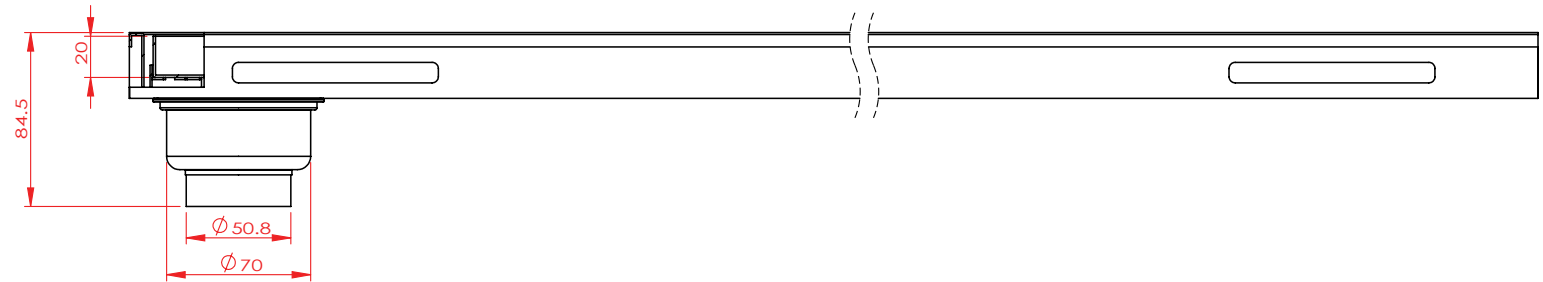
Item Code	Description
3R80PX2-tile	Anti-odour Tile Channel Drain 10x80 cm. With connected pipe, Outlet 2"



**MOONLER**

QUALITY OF LIFE

STAINLESS STEEL 304



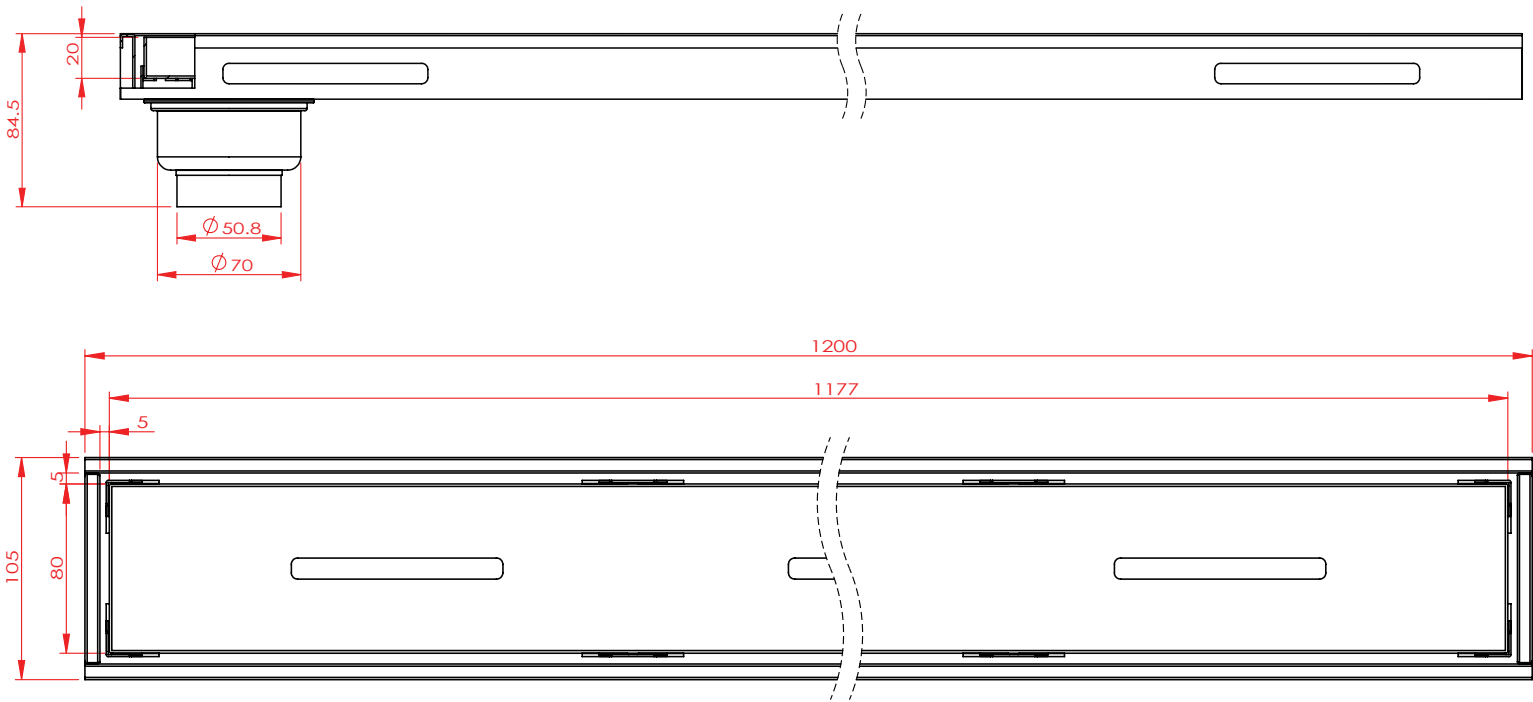
Item Code	Description
3R100PX2-tile	Anti-odour Tile Channel Drain 10x100 cm. With connected pipe, Outlet 2"



**MOONLER**

QUALITY OF LIFE

STAINLESS STEEL 304



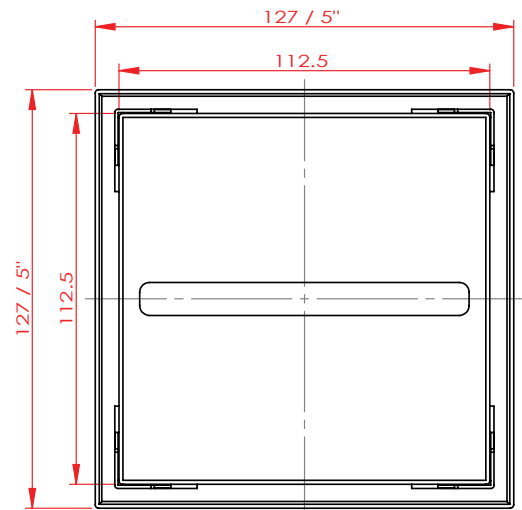
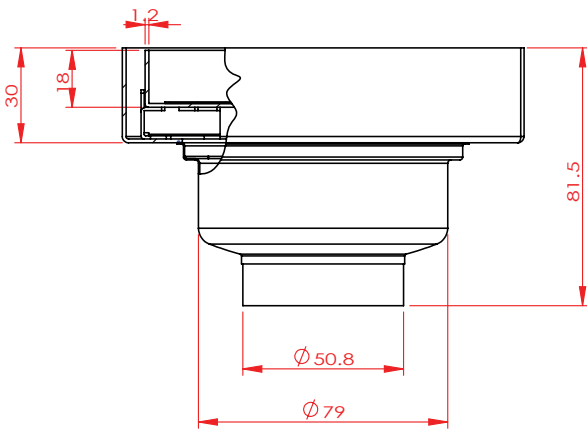
Item Code	Description
3R120PX2-tile	Anti-odour Tile Channel Drain 10x1200 cm. With connected pipe, Outlet 2"



**MOONLER**

QUALITY OF LIFE

STAINLESS STEEL 304



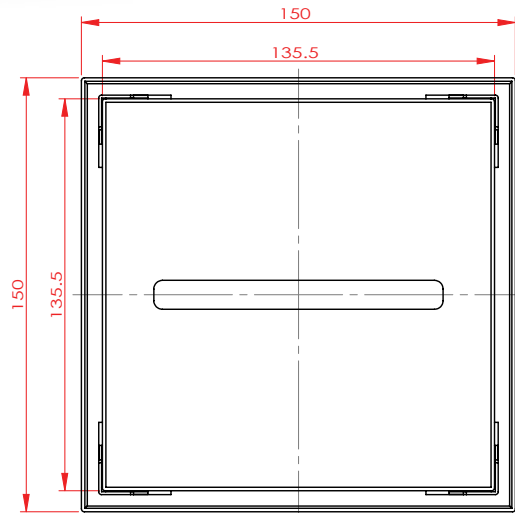
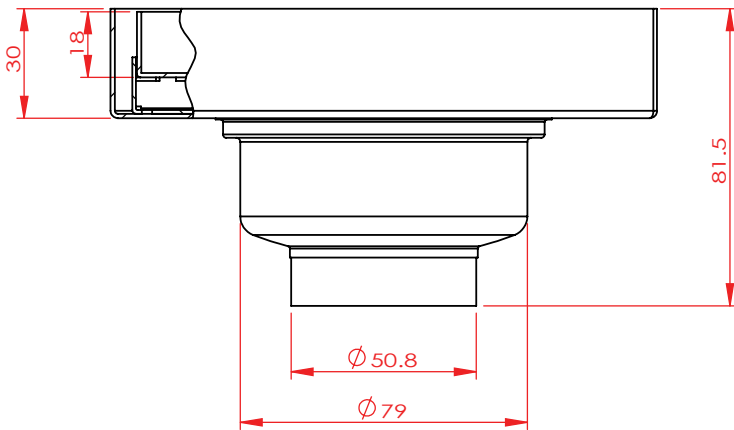
Item Code	Description
225Ti(20)5x5P2	Square Anti-odour Tile Drain 5"x5" Outlet 2"





**MOONLER**

QUALITY OF LIFE  
STAINLESS STEEL 304



Item Code	Description
225Ti(20)150x150P2	Square Anti-odour Tile Drain 6"x6" Outlet 2"